

Torque Tools

For torque-controlled screw tightening





40-200 Nm

Wera

Wera

Wera torque tools








Wera's torque tools offer torque-controlled screw tightening so as to avoid damage to the screw or workpiece and to ensure the integrity of the screw connection.



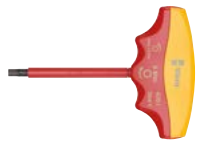
This makes work-intensive drilling-out of screws and unproductive downtimes a thing of the past. It is also important whenever repeat accuracy is required.

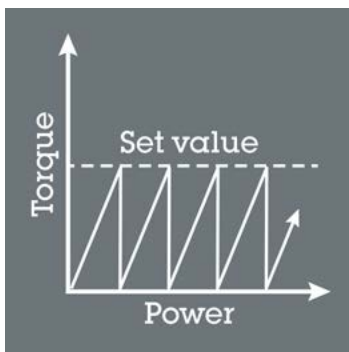
Reliable production combined with working with experts in our own Torque Service Center, ensures consistently high quality and reliable processing. Exact compliance with the strict technical specifications is the only way at Wera.

All torque tools are delivered with a specific test report or a calibration certificate as per the applicable standards and guidelines.

Torque Tools

Measuring range	Type	Measuring method	
2–12 Nm	 <p>Safe-Torque Torque tools with a slide-over mechanism – over-tightening the torque is impossible</p>	Slide-over mechanism	10
2.5–1000 Nm	 <p>Click-Torque Tools with long lever and robust release mechanism when reaching the set torque value</p>	Triggering	14
2.5–25 Nm	 <p>Torque tools for bicycles and e-bikes</p>	Triggering	21
 <p>Insert tools for Click-Torque adjustable torque wrenches</p>			29
0.1–8.8 Nm	 <p>Adjustable Torque Screwdrivers</p>	Slide-over mechanism	38
0.1–8.8 Nm	 <p>Torque Screwdrivers, with a factory pre-set measurement value</p>	Slide-over mechanism	42
0.1–8.8 Nm	 <p>ESD Torque Screwdrivers</p>	Slide-over mechanism	46

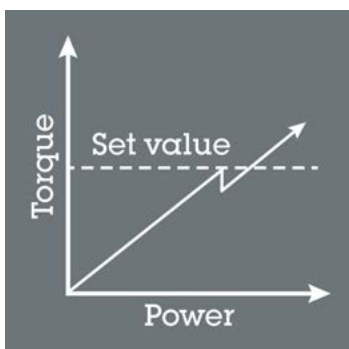
Measuring range	Type	Measuring method	
0.6–5 Nm	 <p>Torque-indicators The robust slip clutch generates a clearly audible and tactile trigger that signals when the set torque is reached.</p>	Slide-over mechanism	50
1.2–3.5 Nm	 <p>Kraftform Kompakt VDE Adjustable Torque Screwdrivers</p>	Slide-over mechanism	54
4 + 5 Nm	 <p>VDE Torque-indicators The robust slip clutch generates a clearly audible and tactile trigger that signals when the set torque is reached.</p>	Slide-over mechanism	60



Torque tools with a slide-over mechanism

The mechanism of these torque tools slips over when the set torque is reached. Overtightening the torque is impossible, even with the continued application of force. Irrespective of this, screwdriving should be stopped after the first slip, as the set torque has already been reached, and further actuation is, therefore, ineffective.

On torque tools with a slide-over mechanism, accuracy is not affected if force is not applied through the centre of the handle.

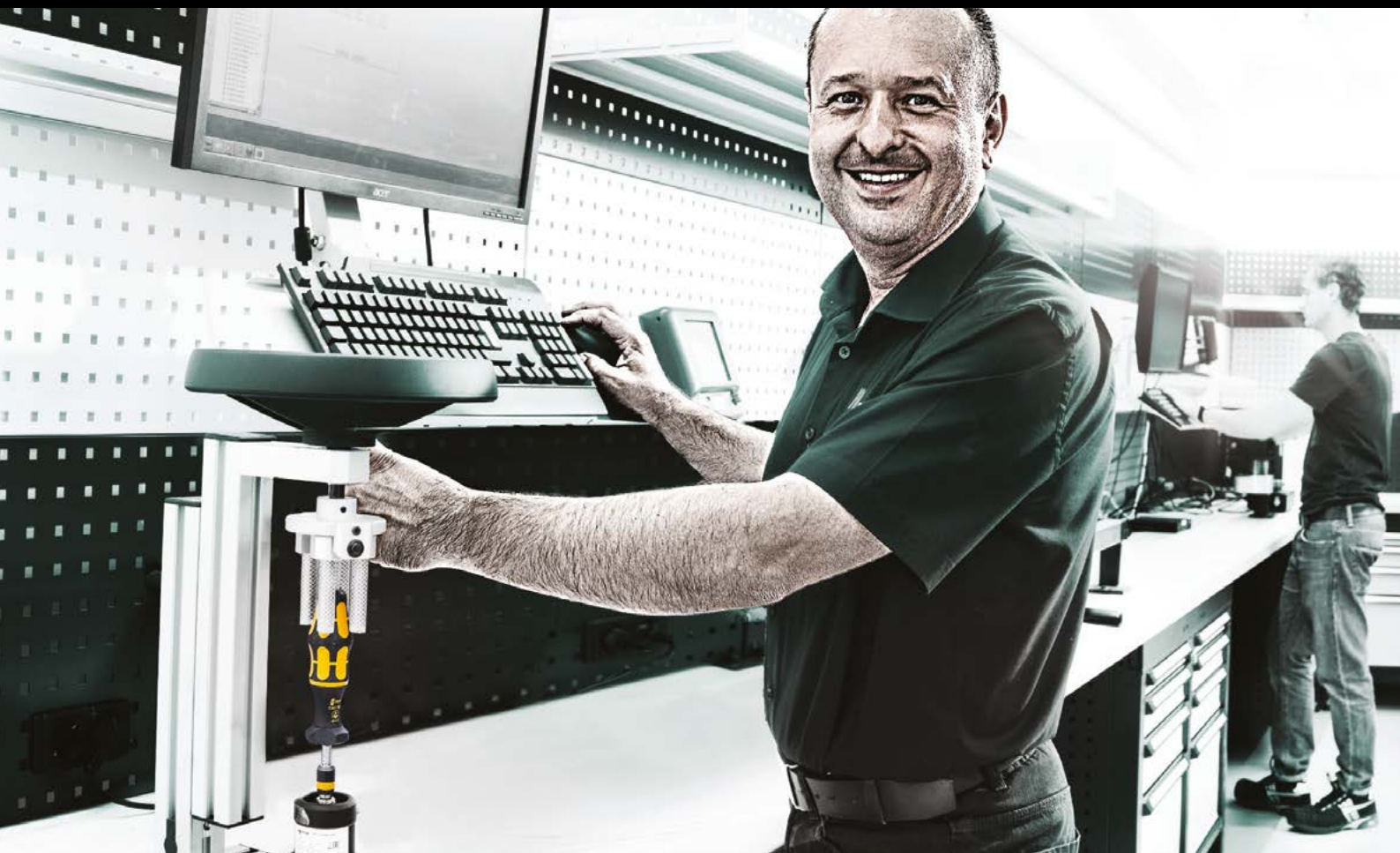


Triggering torque tools

The mechanism of these torque tools triggers audibly and noticeably when the set torque value is reached. If the screw tightening is continued after it has been triggered, it will result in increased torque and can damage the screw connection and/or the torque wrench. After release, the tool can be used again immediately.

With triggering torque tools, accuracy will be affected if force is not applied through the centre of the handle or if the overall length is changed using an insert tool.

Wera Werkzeuge GmbH – Calibration competence in our own laboratory in Wuppertal



All Wera torque tools are produced, adjusted, calibrated and certified under strict quality conditions. On request, Wera can also issue a calibration certificate according to DAkkS standard in cooperation with an accredited specialist laboratory.

A torque tool is basically a testing aid used for controlled tightening and/or loosening of screwdriving connections.

The Wera Torque Service offers you excellent and affordable service packages with short delivery times and will be happy to answer your questions about your torque tool.



Like any other testing instrument, torque tools require sensitive handling, appropriate storage, and regular care to prevent influences that can distort the set torque values. Torque tools can only be used effectively and reliably if the set values are applied correctly.

For the purposes of the normative recommendations and especially in your own interest, a torque tool should be checked, calibrated and, if necessary, adjusted and/or repaired at the latest after every 5,000 load changes or, if the number of load changes can not be determined, every 12 months.

**Visit the Torque Service on our website,
www.wera.de, to find prices and detailed
information about service.**



As part of our service packages, we offer you not only calibration and, if necessary, the adjustment of your torque tool, but also the repair or replacement of defective components.

This means that at Wera you can also calibrate, adjust and, if necessary, repair your torque tools already in use, in accordance with the strict requirements of DIN EN ISO 6789-1: 2017.

What advantages does the Wera Torque Service offer you?

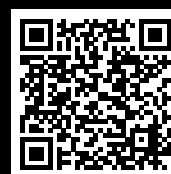
- Comprehensive know how
- Comprehensive range of services: calibration, adjustment, repair and certification of Wera torque tools
- Personal contact and competent advice
- Short reaction times
- Fair and affordable prices
- Fast delivery times
- Supply of replacement tools (on request)



Our service options to choose from

- Factory calibration
- Repair with factory calibration
- DAkkS calibration
- Repair with DAkkS calibration

To get an overview of our Torque service partners by country, scan the QR code.



Alternatively, have a look at the Torque Service section at www.wera.de.

Tool knowledge: What actually is calibration or re-calibration?

Calibration is a measurement process that determines whether a torque tool is actually doing its job at the set torque and triggering accordingly. The so-called re-calibration is the calibration and subsequent readjustment of a torque tool if the calibration shows impermissibly large tolerance deviations or other errors.



Please pay attention to the information about service appointments labelled on the product.



Why Safe-Torque? Isn't every torque wrench safe?

No, not every torque wrench is safe. Many torque wrenches are just triggering wrenches. As tightening the screw is usually continued after triggering due to the delayed reaction time, the torque is unintentionally increased, and the screw overtightened – with risky consequences.



Slide-over mechanism prevents application of excessive torques



The Safe-Torque torque wrench is equipped with a slide-over mechanism. Once the set torque value has been reached, the tool cannot be overtightened, so that excessive torque cannot be applied.



Torque Lock function



The torque function can be deactivated. The Safe-Torque torque wrench can then also be used as a standard ratchet with high loosening moments and for applications with defined angles of rotation.



For clockwise and counterclockwise operation



The Safe-Torque torque wrench is suitable for clockwise and counterclockwise operation with a set torque. When the Torque Lock function is deactivated, tightening and loosening is enabled without torque.

Safe-Torque A 1 torque wrench with 1/4" square head drive, 2-12 Nm



Application: For controlled clockwise and counterclockwise torque operation; tightening and loosening with or without torque

Torque range: 2-12 Nm

Suitable for: 1/4" sockets

Precision: Accuracy ± 10 % of the set value

Design: With 1/4" square head drive, torque wrench, disengageable torque function (Torque Lock function); 72 teeth; low return angle of 5°; easy setting and saving of the desired torque value, with audible and tactile locking when the scale values are reached, slip-over release mechanism when the set torque is reached

Handle: Ergonomic 2-component handle

		Nm	Nm	lbf. ft.	mm	mm	mm	mm	mm	mm	mm	mm	mm	mm
0507580001	1/4"	2-12	0,10	2-9	244	94	38,5	31,6	23,7	9 39/64"	3 45/64"	1 33/64"	1 15/64"	15/16"

Safe-Torque A 2 torque wrench with 1/4" hexagon drive, 2-12 Nm



Application: For controlled clockwise and counterclockwise torque operation; tightening and loosening with or without torque

Torque range: 2-12 Nm

Suitable for: 1/4" bits with 1/4" external hexagon drive as per DIN ISO 1173-C 6.3 and E 6.3 and Wera connection series 1 and 4

Precision: Accuracy ± 10 % of the set value

Design: With 1/4" hexagonal socket drive, torque wrench, disengageable torque function (Torque Lock function); 72 teeth; low return angle of 5°; easy setting and saving of the desired torque value, with audible and tactile locking when the scale values are reached, slip-over release mechanism when the set torque is reached

Handle: Ergonomic 2-component handle

		Nm	Nm	lbf. ft.	mm	mm	mm	mm	mm	mm	mm	mm	mm	mm
05075801001	1/4"	2-12	0,10	2-9	244	94	38,5	31,6	23,7	9 39/64"	3 45/64"	1 33/64"	1 15/64"	15/16"

Safe-Torque A 1 Set 1, 1/4" square head drive, 2-12 Nm



10-piece set; in a surface-friendly, compact and extremely robust textile box. Small size and low weight for better mobility.

1 Safe-Torque A 1 torque wrench with 1/4" square head drive, measuring range 2-12 Nm; for controlled clockwise and counterclockwise torque operation; tightening and loosening with or without torque, disengageable torque function (Torque Lock function); 72 teeth; low return angle of 5°; easy setting and saving of the desired torque value, with audible and tactile locking when the scale values are reached, slip-over release mechanism when the set torque is reached; ergonomic 2-component handle; 8 Zyklop sockets, one Zyklop extension with fast-rotating sleeve, short

05075830001	
●	Safe-Torque A 1 1x 1/4", 2-12 Nm
●	8790 HMA 1x 5,5x23,0; 1x 6,0x23,0; 1x 7,0x23,0; 1x 8,0x23,0; 1x 10,0x23,0; 1x 11,0x23,0; 1x 12,0x23,0; 1x 13,0x23,0
●	8794 SA 1x 1/4"x75,0
●	Hook and Loop Fastener Strip 240 1x 50,0x240,0

Safe-Torque A 1 Imperial Set 1, 1/4" square head drive, 2-12 Nm



10-piece set; in a surface-friendly, compact and extremely robust textile box. Small size and low weight for better mobility.

1 Safe-Torque A 1 torque wrench with 1/4" square head drive, measuring range 2-12 Nm; for controlled clockwise and counterclockwise torque operation; tightening and loosening with or without torque, disengageable torque function (Torque Lock function); 72 teeth; low return angle of 5°; easy setting and saving of the desired torque value, with audible and tactile locking when the scale values are reached, slip-over release mechanism when the set torque is reached; ergonomic 2-component handle; 8 Zyklop sockets, one Zyklop extension with fast-rotating sleeve, short

05075831001	
●	Safe-Torque A 1 1x 1/4", 2-12 Nm
●	8790 HMA 1x 3/16"x23,0; 1x 7/32"x23,0; 1x 1/4"x23,0; 1x 9/32"x23,0; 1x 5/16"x23,0; 1x 3/8"x23,0; 1x 7/16"x23,0; 1x 1/2"x23,0
●	8794 SA 1x 1/4"x75,0
●	Hook and Loop Fastener Strip 240 1x 50,0x240,0

Safe-Torque A 2 Set 1, 1/4" hexagonal, 2-12 Nm



23-piece set; in a surface-friendly, compact and extremely robust textile box. Small size and low weight for better mobility.

1 Safe-Torque A 2 torque wrench with 1/4" hexagonal socket drive, measuring range 2-12 Nm; for controlled clockwise and counterclockwise torque operation; tightening and loosening with or without torque, disengageable torque function (Torque Lock function); 72 teeth; low return angle of 5°; easy setting and saving of the desired torque value, with audible and tactile locking when the scale values are reached, slip-over release mechanism when the set torque is reached; ergonomic 2-component handle; 9 Zyklop sockets, 12 tough bits (1/4", 50 mm long), one connection part for sockets (1/4" external hexagon to 1/4" external square head)

05075832001	
●	Safe-Torque A 2 1x 1/4", 2-12 Nm
●	8790 HMA 1x 5,5x23,0; 1x 6,0x23,0; 1x 7,0x23,0; 1x 8,0x23,0; 1x 9,0x23,0; 1x 10,0x23,0; 1x 11,0x23,0; 1x 12,0x23,0; 1x 13,0x23,0
●	870/1 1x 1/4"x25 ¹⁾
+	851/4 Z 1x PH 2x50
+	867/4 Z TORX® 1x TX 10x50; 1x TX 15x50; 1x TX 20x50; 1x TX 25x50; 1x TX 27x50; 1x TX 30x50
○	840/4 Z 1x 2,5x50; 1x 3,0x50; 1x 4,0x50; 1x 5,0x50; 1x 6,0x50
●	Hook and Loop Fastener Strip 240 1x 50,0x240,0

¹⁾ With friction ball; for manual nut spinner sockets



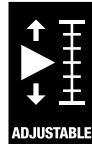


Click-Torque wrench series



We wanted working with torque wrenches to be simple and accurate which is why we developed the Click-Torque wrenches. With the ability to set and save the default values and with the unmistakable, robust Wera design, these torque wrenches are the ideal tools for all bolting applications that

require torque-controlled tightening (clockwise torque wrenches) and tightening and loosening (torque wrenches for insert tools).

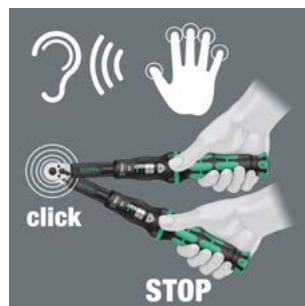


Simple setting



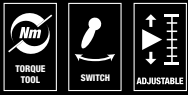
With audible and tactile clicks when adjusting the scale values.

Release mechanism



When the set torque value is reached, an audible and tactile mechanism triggers.

Click-Torque A 5 torque wrench with reversible ratchet, 2.5-25 Nm



Application: For clockwise torque-control

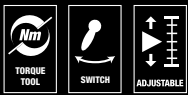
Precision: ± 4% of set value, as per DIN EN ISO 6789-1: 2017-07

Design: With 1/4" square drive, reversible ratchet, 45 teeth; easy setting and saving of the desired torque value, with audible and tactile locking when the scale values are reached (fine scale only in Newton meters), audible and tactile release mechanism when the set torque value is reached

Handle: Ergonomic 2-component handle

	Nm	Nm	lbf. ft.	mm	mm	mm	mm	mm					
05075604001	1/4"	2,5-25	0,10	1-18	290	121	42	25	11,5	11 27/64"	4 49/64"	1 21/32"	1" 7/16"

Click-Torque A 6 torque wrench with reversible ratchet, 2.5-25 Nm



Application: For clockwise torque-control

Precision: ± 4% of set value, as per DIN EN ISO 6789-1: 2017-07

Design: With 1/4" hex drive, reversible ratchet, 45 teeth; easy setting and saving of the desired torque value, with audible and tactile locking when the scale values are reached (fine scale only in Newton meters), audible and tactile release mechanism when the set torque value is reached

Handle: Ergonomic 2-component handle

	Nm	Nm	lbf. ft.	mm	mm	mm	mm	mm					
05075605001	1/4"	2,5-25	0,10	1-18	290	121	42	25	11,5	11 27/64"	4 49/64"	1 21/32"	1" 7/16"

Click-Torque B 1 torque wrench with reversible ratchet, 10-50 Nm



Application: For clockwise torque-control

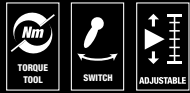
Precision: ± 3% of set value, as per DIN EN ISO 6789-1: 2017-07

Design: With 3/8" square drive, reversible ratchet, 45 teeth; easy setting and saving of the desired torque value, with audible and tactile locking when the scale values are reached (fine scale only in Newton meters), audible and tactile release mechanism when the set torque value is reached

Handle: Ergonomic 2-component handle

	Nm	Nm	lbf. ft.	mm	mm	mm	mm	mm					
05075610001	3/8"	10-50	0,25	8-36	360	140	47	35	16,5	14 11/64"	5 33/64"	1 27/32"	1 3/8" 5/8"

Click-Torque B 2 torque wrench with reversible ratchet, 20-100 Nm



Application: For clockwise torque-control

Precision: ± 3% of set value, as per DIN EN ISO 6789-1: 2017-07

Design: With 3/8" square drive, reversible ratchet, 45 teeth; easy setting and saving of the desired torque value, with audible and tactile locking when the scale values are reached (fine scale only in Newton meters), audible and tactile release mechanism when the set torque value is reached

Handle: Ergonomic 2-component handle

05075611001	3/8"	20-100	0,5	15-73	405	140	47	43	18,5	15 15/16"	5 33/64"	1 27/32"	1 11/16"	45/64"

Click-Torque C 1 torque wrench with reversible ratchet, 10-50 Nm



Application: For clockwise torque-control

Precision: ± 3% of set value, as per DIN EN ISO 6789-1: 2017-07

Design: With 1/2" square drive, reversible ratchet, 45 teeth; easy setting and saving of the desired torque value, with audible and tactile locking when the scale values are reached (fine scale only in Newton meters), audible and tactile release mechanism when the set torque value is reached

Handle: Ergonomic 2-component handle

05075620001	1/2"	10-50	0,25	8-36	360	140	47	35	16,5	14 11/64"	5 33/64"	1 27/32"	1 3/8"	5/8"

Click-Torque C 2 torque wrench with reversible ratchet, 20-100 Nm



Application: For clockwise torque-control

Precision: ± 3% of set value, as per DIN EN ISO 6789-1: 2017-07

Design: With 1/2" square drive, reversible ratchet, 45 teeth; easy setting and saving of the desired torque value, with audible and tactile locking when the scale values are reached (fine scale only in Newton meters), audible and tactile release mechanism when the set torque value is reached

Handle: Ergonomic 2-component handle

05075621001	1/2"	20-100	0,5	15-73	405	140	47	43	18,5	15 15/16"	5 33/64"	1 27/32"	1 11/16"	45/64"

Click-Torque C 3 torque wrench with reversible ratchet, 40-200 Nm



Application: For clockwise torque-control

Precision: ± 3% of set value, as per DIN EN ISO 6789-1: 2017-07

Design: With 1/2" square drive, reversible ratchet, 45 teeth; easy setting and saving of the desired torque value, with audible and tactile locking when the scale values are reached (fine scale only in Newton meters), audible and tactile release mechanism when the set torque value is reached

Handle: Ergonomic 2-component handle

	Nm	Nm	lbf. ft.	mm	mm	mm	mm	mm						
05075622001	1/2"	40-200	1,0	30-146	510	140	47	43	18,5	20 5/64"	5 33/64"	1 27/32"	1 11/16"	45/64"

Click-Torque C 4 torque wrench with reversible ratchet, 60-300 Nm



Application: For clockwise torque-control

Precision: ± 3% of set value, as per DIN EN ISO 6789-1: 2017-07

Design: With 1/2" square drive, reversible ratchet, 45 teeth; easy setting and saving of the desired torque value, with audible and tactile locking when the scale values are reached (fine scale only in Newton meters), audible and tactile release mechanism when the set torque value is reached

Handle: Ergonomic 2-component handle

	Nm	Nm	lbf. ft.	mm	mm	mm	mm	mm						
05075623001	1/2"	60-300	1,0	45-220	595	140	47	43	18,5	23 27/64"	5 33/64"	1 27/32"	1 11/16"	45/64"

Click-Torque C 5 torque wrench with reversible ratchet, 80-400 Nm



Application: For clockwise torque-control

Precision: Accuracy ± 3% of set value, as per DIN EN ISO 6789-1: 2017-07; application range with up to max. 400 Nm above standard DIN EN ISO 6789-1: 2017-07 (maximum value: 340 Nm)

Design: With 1/2" square drive, reversible ratchet, 45 teeth; easy setting and saving of the desired torque value, with audible and tactile locking when the scale values are reached (fine scale only in Newton meters), audible and tactile release mechanism when the set torque value is reached

Handle: Ergonomic 2-component handle

	Nm	Nm	lbf. ft.	mm	mm	mm	mm	mm						
05075624001	1/2"	80-400	1,0	60-295	680	140	47	43	18,5	26 49/64"	5 33/64"	1 27/32"	1 11/16"	45/64"

Click-Torque E 1 torque wrench with reversible ratchet, 200-1000 Nm



Application: For clockwise torque-control

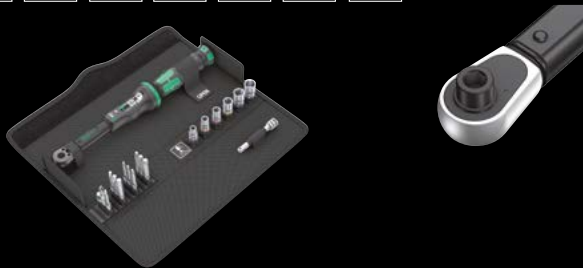
Precision: ± 3% of set value, as per DIN EN ISO 6789-1: 2017-07

Design: With 3/4" square drive, reversible ratchet, 45 teeth; easy setting and saving of the desired torque value, with audible and tactile locking when the scale values are reached (fine scale only in Newton meters), audible and tactile release mechanism when the set torque value is reached

Handle: Ergonomic 2-component handle

	Nm	Nm	lbf. ft.	mm	mm	mm	mm	mm	mm	mm	mm	mm	mm	
05075630001	3/4"	200-1000	1,00	148-737	1250	140	47	63	30	49 7/32"	5 33/64"	1 27/32"	2 31/64"	1 3/16"

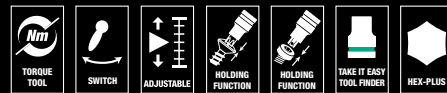
Click-Torque A 6 Set 1, 2.5-25 Nm



20-piece set; in a surface protecting, compact and extremely robust textile box; low volume and weight for simplified mobility.

1 Click-Torque A 6 torque wrench with 1/4" hexagon drive, covering a range of 2.5 Nm-25 Nm, accuracy ± 4% of the set value, as per DIN EN ISO 6789-1: 2017-07, for clockwise torque control, reversible ratchet, 45 teeth, easy setting and saving of the desired torque value, with audible and tactile locking when the scale values are reached (fine scale only in Newton meters), audible and tactile release mechanism when the set torque value is reached, ergonomic 2-component handle, 6 Zyklop sockets, 1 adapter 1/4" hexagon to 1/4" square, 1 Zyklop extension with free-turning sleeve, short, 11 bits

Click-Torque C 3 Set 1, 40-200 Nm



13-piece set; in a surface protecting, compact and extremely robust textile box; low volume and weight for simplified mobility.

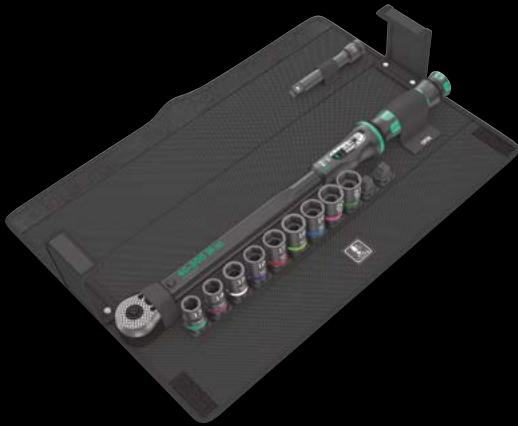
1 Click-Torque torque wrench C 3 with 1/2" square drive, covering a range of 40 Nm-200 Nm, accuracy ± 3% of the set value, as per DIN EN ISO 6789-1: 2017-07, for clockwise torque control, reversible ratchet, 45 teeth, easy setting and saving of the desired torque value, with audible and tactile locking when the scale values are reached (fine scale only in Newton meters), audible and tactile release mechanism when the set torque value is reached, ergonomic 2-component handle, 4 Zyklop sockets, 4 Zyklop bit sockets with holding function for TORX® screws made according to Acument Intellectual Properties specifications, 3 Zyklop bit sockets with holding function for hexagon socket screws, 1 Zyklop extension with free-turning sleeve

05130110001	
	Click-Torque A 6 1x 1/4", 2,5-25 Nm
	851/4 TZ 1x PH 2x50
	867/4 Z TORX® 1x TX 15x50; 1x TX 20x50; 1x TX 25x50; 1x TX 27x50; 1x TX 30x50; 1x TX 40x50
	840/4 Z 1x 3,0x50; 1x 4,0x50; 1x 5,0x50; 1x 6,0x50
	870/1 1x 1/4"x25 ¹⁾
	8794 SA 1x 1/4"x75,0
	8790 HMA 1x 6,0x23,0; 1x 7,0x23,0; 1x 8,0x23,0; 1x 10,0x23,0; 1x 12,0x23,0; 1x 13,0x23,0
	Hook and Loop Fastener Strip 240 1x 50,0x240,0

05075680001	
	Click-Torque C 3 1x 1/2", 40-200 Nm
	8790 HMC 1x 10,0x37,0; 1x 13,0x37,0; 1x 17,0x37,0; 1x 19,0x37,0
	8767 C HF 1x TX 30x60,0; 1x TX 40x60,0; 1x TX 45x60,0; 1x TX 50x60,0
	8740 C HF 1x 6,0x60,0; 1x 8,0x60,0; 1x 10,0x60,0
	8794 SC 1x 1/2"x125,0

¹⁾ With friction ball; for manual nut spinner sockets

Click-Torque C 3 set 2 for cement screwdriving, 40-200 Nm



11-piece set; in a surface-preserving, compact and extremely robust textile box. Low volume and weight for simplified mobility.

1 Click-Torque C 3 torque wrench with reversible ratchet with 1/2"-square head-drive, measuring range 40 Nm-200 Nm, accuracy $\pm 3\%$ of the set value, as per DIN EN ISO 6789-1:2017-07, for clockwise torque control, reversible ratchet, 45 teeth, easy setting and saving of the desired torque value, with audible and tactile locking when the scale values are reached (fine scale only in Newton meters), audible and tactile release mechanism when the set torque value is reached, ergonomic 2-component handle; 9 Impaktor 8790 C socket wrench inserts and 1 short extension 8894 SC for the use with electric and cordless screwdrivers (not with impact wrenches).

05075681001	
	Click-Torque 1x 1/2", 40-200 Nm C 3
●	8790 C Impaktor 1x 13,0x38,0; 1x 14,0x38,0; 1x 15,0x38,0; 1x 16,0x38,0; 1x 17,0x38,0; 1x 18,0x38,0; 1x 19,0x38,0; 1x 20,0x38,0; 1x 21,0x38,0
● ○	8894 SC 1x 1/2"x125,0

For fitting cement screws



The tool set is particularly suitable for fitting security-relevant cement screws with defined torque moments as per screw manufacturer instructions.



For electric or pneumatic impact wrenches



The Impaktor technology ensures above-average service life of the Impaktor socket wrench plug-ins even under extreme conditions.

Cross-bore and ring socket



Due to the groove and the ring socket, the tool can be secured with a locking pin or O-ring on the power tool.

Profile-friendly power transmission



The hexagon profile allows the transmission of high forces and puts less strain on the edges of bolts or screw heads than a double hexagon profile. Fine-toothed ratchets also make the use of a double hexagon profile superfluous, even in confined spaces, thanks to their small return angle.



Bicycle Set Torque 1, 2.5-25 Nm



16-piece set; in a surface protecting, compact and extremely robust textile box; low volume and weight for simplified mobility.

1 Click-Torque torque wrench A 5 with 1/4" square drive, covering a range of 2.5 Nm-25 Nm, accuracy $\pm 4\%$ of the set value, as per DIN EN ISO 6789-1: 2017-07, for clockwise torque control, reversible ratchet, 45 teeth, easy setting and saving of the desired torque value, with audible and tactile locking when the scale values are reached (fine scale only in Newton meters), audible and tactile release mechanism when the set torque value is reached, ergonomic 2-component handle, 4 Zyklop sockets, with 1/4" drive, 4 Zyklop bit sockets for TORX® screws, with 1/4" drive, 7 bit sockets for hexagon socket screws with 1/4" drive with holding function; Take it easy tool finder: Colour coding to enable the desired bit socket to be easily selected

For the road and the workshop



The Bicycle Set Torque 1 contains tools for the most popular screw profiles on road bikes, mountain bikes and e-bikes. With the included Click-Torque A torque wrench (2.5-25 Nm), even torque-sensitive screwed connections can be loosened and tightened reliably. Clear and compact tool storage in the textile box.

05004180001	
	Click-Torque A 5 1x 1/4", 2,5-25 Nm
●	8790 HMA 1x 10,0x23,0; 1x 13,0x23,0; 1x 14,0x23,0; 1x 15,0x23,0
⊕	8767 A 1x TX 10x28,0; 1x TX 20x28,0; 1x TX 25x28,0; 1x TX 30x28,0
○	8740 A HF 1x 3,0x28,0; 1x 4,0x28,0; 1x 5,0x28,0; 1x 5,0x100,0; 1x 6,0x28,0; 1x 6,0x100,0; 1x 8,0x28,0
	Hook and Loop Fastener Strip 240 1x 50,0x240,0



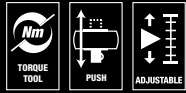
For right and left direction



The Click-Torque torque wrench is suitable for clockwise and anti-clockwise torque-control. Very smooth change of direction thanks to captive square head insert.



Click-Torque C 2 Push R/L adjustable torque wrench for clockwise and anti-clockwise torque-control, 20-100 Nm



Application: For clockwise and anti-clockwise torque-control

Precision: Precise to $\pm 3\%$ of the set value, as per DIN EN ISO 6789-1:2017-07

Design: With $\frac{1}{2}$ " square head drive with socket locking, square head insert to change the tightening direction, fine-teethed ratchet mechanics, 45 teeth; easy setting and saving of the desired torque, with audible and tactile locking when the scale values are reached (fine scale only in Newton meters), audible and tactile release mechanism when the torque value is reached

Handle: Ergonomic 2-component handle

		Nm	Nm	lbf. ft.	mm	mm	mm	mm	mm	mm	mm	mm	mm	
05075625001	$\frac{1}{2}$ "	20-100	0,5	15-73	405	140	47	43	18,5	15 $\frac{15}{16}$ "	5 $\frac{33}{64}$ "	1 $\frac{27}{32}$ "	1 $\frac{11}{16}$ "	$\frac{45}{64}$ "

Click-Torque C 3 Push R/L adjustable torque wrench for clockwise and anti-clockwise torque-control, 40-200 Nm



Application: For clockwise and anti-clockwise torque-control

Precision: Precise to $\pm 3\%$ of the set value, as per DIN EN ISO 6789-1:2017-07

Design: With $\frac{1}{2}$ " square head drive with socket locking, square head insert to change the tightening direction, fine-teethed ratchet mechanics, 45 teeth; easy setting and saving of the desired torque, with audible and tactile locking when the scale values are reached (fine scale only in Newton meters), audible and tactile release mechanism when the torque value is reached

Handle: Ergonomic 2-component handle

		Nm	Nm	lbf. ft.	mm	mm	mm	mm	mm	mm	mm	mm	mm	
05075626001	$\frac{1}{2}$ "	40-200	1,0	30-146	510	140	47	43	18,5	20 $\frac{5}{64}$ "	5 $\frac{33}{64}$ "	1 $\frac{27}{32}$ "	1 $\frac{11}{16}$ "	$\frac{45}{64}$ "

Click-Torque E 1 Push R/L adjustable torque wrench for clockwise and anti-clockwise torque-control, 200-1000 Nm



Application: For clockwise and anti-clockwise torque-control

Precision: Precise to $\pm 3\%$ of the set value, as per DIN EN ISO 6789-1:2017-07

Design: With $\frac{3}{4}$ " square head drive, square head insert to change the tightening direction, fine-teethed ratchet mechanics, 45 teeth; easy setting and saving of the desired torque, with audible and tactile locking when the scale values are reached (fine scale only in Newton meters), audible and tactile release mechanism when the torque value is reached

Handle: Ergonomic 2-component handle

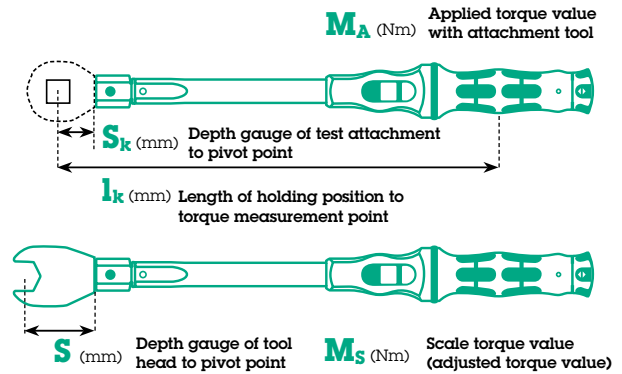
		Nm	Nm	lbf. ft.	mm	mm	mm	mm	mm	mm	mm	mm	mm	
05075631001	$\frac{3}{4}$ "	200-1000	1,0	148-737	1250	140	47	63	30	49 $\frac{7}{32}$ "	5 $\frac{33}{64}$ "	1 $\frac{27}{32}$ "	2 $\frac{31}{64}$ "	1 $\frac{3}{16}$ "



Calibration of Click-Torque X wrenches

The tool was calibrated by means of a test adapter whose pitch is designated "Sk". If the gauge of the tool you are using deviates from the length "Sk", the actual release torque will change according to the formula.

$$M_s = \frac{M_A \times l_k}{l_k + (S - S_k)}$$



Example Click-Torque X 4 (120 Nm) + 7780 (38 mm)



	14x18	40-200	1,0	30-146	480	S _k	l _k	140	47	32	26	18 57/64"	5 33/64"	1 27/32"	1 17/64"	1 1/32"
	Nm	Nm	lbf. ft.	mm	mm	mm	mm	mm	mm	mm	mm	mm	mm	mm	mm	mm
05075654001	14x18	40-200	1,0	30-146	480	25,5	435,0	140	47	32	26	18 57/64"	5 33/64"	1 27/32"	1 17/64"	1 1/32"



7780 (38 mm)

	14x18	38	32,5	61,0	36,0	52,0	15,0
	mm	mm	mm	mm	mm	mm	mm
05078686001	14x18	38	32,5	61,0	36,0	52,0	15,0

$$M_s = \frac{M_A \times l_k}{l_k + (S - S_k)} = \frac{120 \times 435}{435 + (32,5 - 25,5)} = 118,1 \text{ Nm} (\approx 118 \text{ Nm})$$



FOR INSERT TOOLS

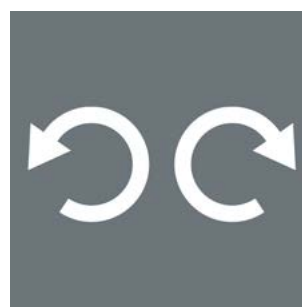
Drive 9x12 mm



9x12 mm

For 9x12 mm interchangeable insert tools.

For right and left direction



The Click-Torque wrenches for insert tools are suitable for clockwise and counterclockwise uses.

Click-Torque X 1 torque wrench for insert tools, 2.5-25 Nm



Application: For right and left-handed use

Precision: ± 4% of set value, as per DIN EN ISO 6789-1: 2017-07

Design: For 9x12 mm interchangeable insert tools; easy setting and saving of the desired torque value, with audible and tactile locking when the scale values are reached (fine scale only in Newton meters), audible and tactile release mechanism when the set torque value is reached

Handle: Ergonomic 2-component handle

05075651001	9x12	Scale			Sk	lk	mm	mm	mm	mm	mm	mm	mm	mm	mm	
		Nm	Nm	lbf. ft.												
		2,5-25	0,10	1-18	283	17,5	240,0	121	42	24	20	11 9/64"	4 49/64"	1 21/32"	15/16"	25/32"

¹ Sk = Depth gauge of test attachment to pivot point; lk = Length of holding position to torque measurement point

Click-Torque X 2 torque wrench for insert tools, 10-50 Nm



Application: For right and left-handed use

Precision: ± 3% of set value, as per DIN EN ISO 6789-1: 2017-07

Design: For 9x12 mm interchangeable insert tools; easy setting and saving of the desired torque value, with audible and tactile locking when the scale values are reached (fine scale only in Newton meters), audible and tactile release mechanism when the set torque value is reached

Handle: Ergonomic 2-component handle

05075652001	9x12	Scale			Sk	lk	mm	mm	mm	mm	mm	mm	mm	mm	mm	
		Nm	Nm	lbf. ft.												
		10-50	0,25	8-36	338	17,5	285,0	140	47	29	20	13 5/16"	5 33/64"	1 27/32"	1 9/64"	25/32"

¹ Sk = Depth gauge of test attachment to pivot point; lk = Length of holding position to torque measurement point

Click-Torque X 3 torque wrench for insert tools, 20-100 Nm



Application: For right and left-handed use

Precision: ± 3% of set value, as per DIN EN ISO 6789-1: 2017-07

Design: For 9x12 mm interchangeable insert tools; easy setting and saving of the desired torque value, with audible and tactile locking when the scale values are reached (fine scale only in Newton meters), audible and tactile release mechanism when the set torque value is reached

Handle: Ergonomic 2-component handle

05075653001	9x12	Scale			Sk	lk	mm	mm	mm	mm	mm	mm	mm	mm	mm	
		Nm	Nm	lbf. ft.												
		20-100	0,5	15-73	372	17,5	329,0	140	47	29	20	14 41/64"	5 33/64"	1 27/32"	1 9/64"	25/32"

¹ Sk = Depth gauge of test attachment to pivot point; lk = Length of holding position to torque measurement point

Click-Torque X 4 torque wrench for insert tools, 40-200 Nm



Application: For right and left-handed use

Precision: ± 3% of set value, as per DIN EN ISO 6789-1: 2017-07

Design: For 14x18 mm interchangeable insert tools; easy setting and saving of the desired torque value, with audible and tactile locking when the scale values are reached (fine scale only in Newton meters), audible and tactile release mechanism when the set torque value is reached

Handle: Ergonomic 2-component handle

Part No.	14x18	Scale			S _k	l _k	mm	mm	mm	mm	mm	mm	mm	mm	mm	mm
		Nm	Nm	lbf. ft.												
05075654001	14x18	40-200	1,0	30-146	480	25,5	435,0	140	47	32	26	18 57/64"	5 33/64"	1 27/32"	1 17/64"	1 1/32"

¹⁾ S_k = Depth gauge of test attachment to pivot point; l_k = Length of holding position to torque measurement point

Click-Torque X 5 torque wrench for insert tools, 60-300 Nm



Application: For right and left-handed use

Precision: ± 3% of set value, as per DIN EN ISO 6789-1: 2017-07

Design: For 14x18 mm interchangeable insert tools; easy setting and saving of the desired torque value, with audible and tactile locking when the scale values are reached (fine scale only in Newton meters), audible and tactile release mechanism when the set torque value is reached

Handle: Ergonomic 2-component handle

Part No.	14x18	Scale			S _k	l _k	mm	mm	mm	mm	mm	mm	mm	mm	mm	mm
		Nm	Nm	lbf. ft.												
05075655001	14x18	60-300	1,0	45-220	570	25,5	528,0	140	47	32	26	22 7/16"	5 33/64"	1 27/32"	1 17/64"	1 1/32"

¹⁾ S_k = Depth gauge of test attachment to pivot point; l_k = Length of holding position to torque measurement point

Click-Torque X 6 torque wrench for insert tools, 80-400 Nm



Application: For right and left-handed use

Precision: ± 3% of set value, as per DIN EN ISO 6789-1: 2017-07; application range with up to max. 400 Nm above standard DIN EN ISO 6789-1: 2017-07 (maximum value: 340 Nm);

Design: For 14x18 mm interchangeable insert tools; easy setting and saving of the desired torque value, with audible and tactile locking when the scale values are reached (fine scale only in Newton meters), audible and tactile release mechanism when the set torque value is reached

Handle: Ergonomic 2-component handle

Part No.	14x18	Scale			S _k	l _k	mm	mm	mm	mm	mm	mm	mm	mm	mm	mm
		Nm	Nm	lbf. ft.												
05075656001	14x18	80-400	1,0	60-295	655	25,5	615,0	140	47	32	26	25 25/32"	5 33/64"	1 27/32"	1 17/64"	1 1/32"

¹⁾ S_k = Depth gauge of test attachment to pivot point; l_k = Length of holding position to torque measurement point

Pre-set click torque wrenches

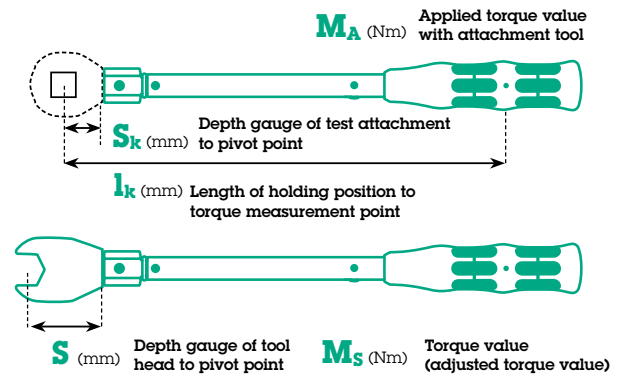


The Click-Torque XP torque wrenches are provided with pre-set torque values. These tools are ideal for all applications where the same torque and repeat accuracy is required.

Calibration of Click-Torque XP wrenches

The factory pre-set torque was calibrated by means of a test adapter whose pitch is designated "Sk". If the gauge of the tool you are using deviates from the length "lk", the actual release torque will change according to the formula.

$$M_s = \frac{M_A \times l_k}{l_k + (S - S_k)}$$



When ordering, please state the desired pre-set torque and the depth gauge size "S" of the attachment tool used.

Example Click-Torque XP 4 (120 Nm) + 7780 (38 mm)

Click-Torque XP 4

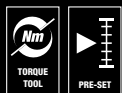
	□	Torque			Sk	lk	Pitch		Pitch		Pitch		Pitch			
		Nm	Nm	lbf. ft.			mm	mm	mm	mm	mm	mm	mm	mm		
05075673001	14x18	20,0	20-250	15-184	457	25,5	430,0	145	41	32	26	17 63/64"	5 45/64"	1 39/64"	1 17/64"	1 1/32"

7780 (38 mm)

	□	Pitch					
		mm	mm	mm	mm	mm	mm
05078686001	14x18	38	32,5	61,0	36,0	52,0	15,0

$$M_s = \frac{M_A \times l_k}{l_k + (S - S_k)} = \frac{120 \times 430}{430 + (32,5 - 25,5)} = 118,1 \text{ Nm} (\approx 118 \text{ Nm})$$

Click-Torque XP 1 pre-set adjustable torque wrench for insert tools, 2.5-25 Nm, 2.5 Nm



Application: For right and left-handed use

Pre-set torque: 2.5 Nm

Precision: ± 2% of set value, as per DIN EN ISO 6789-1: 2017-07

Design: For 9x12 mm interchangeable insert tools; audible and tactile release mechanism when the set torque value is reached

Handle: Ergonomic 2-component handle

	□	Torque			Sk	lk	Pitch		Pitch		Pitch		Pitch			
		Nm	Nm	lbf. ft.			mm	mm	mm	mm	mm	mm	mm	mm		
05075670001	9x12	2,5	2,5-25	2-18	217	17,5	180,0	137	35	24	20	8 35/64"	5 25/64"	1 21/32"	15/16"	25/32"
05075670010 ¹⁾	9x12	2,5	2,5-25	2-18	217	17,5	180,0	137	35	24	20	8 35/64"	5 25/64"	1 21/32"	15/16"	25/32"

¹⁾ Any presetting which differs from this value, can be set to a desired torque value within the specified metered range upon request. The desired settings can be made in the following units: Nm, kgf. m, lbf. ft., ozf. in., dN. m, kgf. cm, lbf. in., in. oz., cN. m, gf. m, ft. lb, gf. cm, in. lb.

²⁾ Sk = Depth gauge of test attachment to pivot point; lk = Length of holding position to torque measurement point

Click-Torque XP 2 pre-set adjustable torque wrench for insert tools, 10-50 Nm, 10 Nm



- Application:** For right and left-handed use
- Pre-set torque:** 10.0 Nm
- Precision:** ± 2% of set value, as per DIN EN ISO 6789-1: 2017-07
- Design:** For 9x12 mm interchangeable insert tools; audible and tactile release mechanism when the set torque value is reached
- Handle:** Ergonomic 2-component handle

	□	Torque Scale			S _k	l _k	□	□	□	□	□	□	□	□	□	
		Nm	Nm	lbf. ft.												
05075671001	9x12	10,0	10-50	8-36	262	17,5	225,0	137	35	24	20	10 5/16"	5 25/64"	1 3/8"	15/16"	25/32"
05075671010 ¹⁾	9x12	10,0	10-50	8-36	262	17,5	225,0	137	35	24	20	10 5/16"	5 25/64"	1 3/8"	5/16"	25/32"

¹⁾ Any presetting which differs from this value, can be set to a desired torque value within the specified metered range upon request. The desired settings can be made in the following units: Nm, kgf. m, lbf. ft., ozf. in., dN, m, kgf. cm, lbf. in, in. oz, cN, m, gf, m, ft, lb, gf, cm, in, lb.

²⁾ S_k = Depth gauge of test attachment to pivot point; l_k = Length of holding position to torque measurement point

Click-Torque XP 3 pre-set adjustable torque wrench for insert tools, 15-100 Nm, 15 Nm



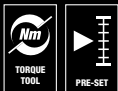
- Application:** For right and left-handed use
- Pre-set torque:** 15.0 Nm
- Precision:** ± 2% of set value, as per DIN EN ISO 6789-1: 2017-07
- Design:** For 9x12 mm interchangeable insert tools; audible and tactile release mechanism when the set torque value is reached
- Handle:** Ergonomic 2-component handle

	□	Torque Scale			S _k	l _k	□	□	□	□	□	□	□	□	□	
		Nm	Nm	lbf. ft.												
05075672001	9x12	15,0	15-100	11-74	332	17,5	296,0	137	35	24	20	13 5/64"	5 25/64"	1 3/8"	15/16"	25/32"
05075672010 ¹⁾	9x12	15,0	15-100	11-74	332	17,5	296,0	137	35	24	20	13 5/64"	5 25/64"	1 3/8"	15/16"	25/32"

¹⁾ Any presetting which differs from this value, can be set to a desired torque value within the specified metered range upon request. The desired settings can be made in the following units: Nm, kgf. m, lbf. ft., ozf. in., dN, m, kgf. cm, lbf. in, in. oz, cN, m, gf, m, ft, lb, gf, cm, in, lb.

²⁾ S_k = Depth gauge of test attachment to pivot point; l_k = Length of holding position to torque measurement point

Click-Torque XP 4 pre-set adjustable torque wrench for insert tools, 20-250 Nm, 20 Nm



- Application:** For right and left-handed use
- Pre-set torque:** 20.0 Nm
- Precision:** ± 2% of set value, as per DIN EN ISO 6789-1: 2017-07
- Design:** For 14x18 mm interchangeable insert tools; audible and tactile release mechanism when the set torque value is reached
- Handle:** Ergonomic 2-component handle

	□	Torque Scale			S _k	l _k	□	□	□	□	□	□	□	□	□	
		Nm	Nm	lbf. ft.												
05075673001	14x18	20,0	20-250	15-184	457	25,5	430,0	145	41	32	26	17 63/64"	5 45/64"	1 39/64"	1 17/64"	1 1/32"
05075673010 ¹⁾	14x18	20,0	20-250	15-184	457	25,5	430,0	145	41	32	26	17 63/64"	5 45/64"	1 39/64"	1 17/64"	1 1/32"

¹⁾ Any presetting which differs from this value, can be set to a desired torque value within the specified metered range upon request. The desired settings can be made in the following units: Nm, kgf. m, lbf. ft., ozf. in., dN, m, kgf. cm, lbf. in, in. oz, cN, m, gf, m, ft, lb, gf, cm, in, lb.

²⁾ S_k = Depth gauge of test attachment to pivot point; l_k = Length of holding position to torque measurement point

7770 Open end insert, 9x12 mm



A Form

05078600001
05078601001
05078602001
05078603001
05078604001
05078605001



B Form

05078606001
05078607001
05078608001
05078609001
05078610001
05078611001
05078612001



Application: Hexagon screw heads or nuts

Drive: 9x12 mm; for torque wrenches of the Click-Torque X and XP series with 9x12 mm holder

Design: Forged, chrome vanadium steel, matt chrome plated; with safety pin

	mm	mm	mm	mm	mm	mm	mm
05078600001	9x12	7	17,5	39,0	22,0	22,0	5,0
05078601001	9x12	8	17,5	39,0	22,0	22,0	5,0
05078602001	9x12	9	17,5	39,0	22,0	22,0	5,0
05078603001	9x12	10	17,5	39,0	22,0	22,0	5,0
05078604001	9x12	11	17,5	39,0	22,0	22,0	5,0
05078605001	9x12	12	17,5	39,0	22,0	22,0	5,0
05078606001	9x12	13	17,5	41,0	24,0	30,0	7,0
05078607001	9x12	14	17,5	41,0	24,0	30,0	7,0
05078608001	9x12	15	17,5	41,0	24,0	30,0	7,0
05078609001	9x12	16	17,5	41,0	24,0	30,0	7,0
05078610001	9x12	17	17,5	41,0	24,0	30,0	7,0
05078611001	9x12	18	17,5	41,0	24,0	30,0	7,0
05078612001	9x12	19	17,5	41,0	24,0	30,0	7,0

7780 Open end insert, 14x18 mm



A Form

05078670001



B Form

05078671001
05078672001
05078673001
05078674001
05078675001
05078676001



C Form

05078677001
05078678001
05078679001
05078680001
05078681001



D Form

05078682001
05078683001
05078684001
05078685001
05078686001
05078687001

Application: Hexagon screw heads or nuts

Drive: 14x18 mm; for torque wrenches of the Click-Torque X and XP series with 14x18 mm holder

Design: Forged, chrome vanadium steel, matt chrome plated; with safety pin



	mm	mm	mm	mm	mm	mm	mm
05078670001	14x18	13	25,5	56,0	32,0	30,0	7,0
05078671001	14x18	14	25,5	58,0	33,0	32,0	8,0
05078672001	14x18	15	25,5	58,0	33,0	32,0	8,0
05078673001	14x18	16	25,5	58,0	33,0	32,0	9,0
05078674001	14x18	17	25,5	58,0	33,0	32,0	9,0
05078675001	14x18	18	25,5	58,0	33,0	32,0	9,7
05078676001	14x18	19	25,5	58,0	33,0	32,0	9,7
05078677001	14x18	21	25,5	61,0	36,0	52,0	11,0
05078678001	14x18	22	25,5	61,0	36,0	52,0	11,0
05078679001	14x18	24	27,5	61,0	36,0	52,0	12,0
05078680001	14x18	26	30,0	61,0	36,0	52,0	13,0
05078681001	14x18	27	30,0	61,0	36,0	52,0	13,0
05078682001	14x18	29	30,0	61,0	36,0	52,0	14,0
05078683001	14x18	30	30,0	61,0	36,0	52,0	14,0
05078684001	14x18	32	32,5	61,0	36,0	52,0	14,0
05078685001	14x18	36	32,5	61,0	36,0	52,0	15,0
05078686001	14x18	38	32,5	61,0	36,0	52,0	15,0
05078687001	14x18	41	32,5	61,0	36,0	52,0	15,0

7771 Ring spanner insert, 9x12 mm



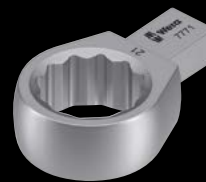
A Form

05078620001
05078621001
05078622001
05078623001
05078624001



B Form

05078625001
05078626001
05078627001
05078628001
05078629001
05078630001
05078631001
05078632001



C Form

05078633001



Application: Hexagon screw heads or nuts

Drive: 9x12 mm; for torque wrenches of the Click-Torque X and XP series with 9x12 mm holder

Design: Forged, chrome vanadium steel, matt chrome plated; with safety pin

	mm	mm	mm	mm	mm	mm	mm
05078620001	9x12	7	17,5	41,0	24,0	22,0	8,0
05078621001	9x12	8	17,5	41,0	24,0	22,0	8,0
05078622001	9x12	9	17,5	41,0	24,0	22,0	8,0
05078623001	9x12	10	17,5	41,0	24,0	22,0	8,0
05078624001	9x12	11	17,5	41,0	24,0	22,0	8,0
05078625001	9x12	12	17,5	44,0	27,0	22,0	11,0
05078626001	9x12	13	17,5	44,0	27,0	22,0	11,0
05078627001	9x12	14	17,5	44,0	27,0	22,0	11,0
05078628001	9x12	15	17,5	44,0	27,0	22,0	11,0
05078629001	9x12	16	17,5	44,0	27,0	22,0	11,0
05078630001	9x12	17	17,5	44,0	27,0	22,0	11,0
05078631001	9x12	18	17,5	44,0	27,0	22,0	11,0
05078632001	9x12	19	17,5	44,0	27,0	22,0	11,0
05078633001	9x12	21	17,5	51,0	34,0	33,0	15,0

7781 Ring spanner insert, 14x18 mm



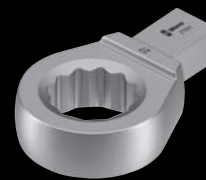
A Form

05078690001
05078691001
05078692001



B Form

05078693001
05078694001
05078695001
05078696001
05078697001
05078698001
05078699001



C Form

05078700001
05078701001
05078702001
05078703001
05078704001
05078705001



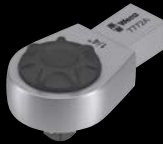
Application: Hexagon screw heads or nuts

Drive: 14x18 mm; for torque wrenches of the Click-Torque X series with 14x18 mm holder

Design: Forged, chrome vanadium steel, matt chrome plated; with safety pin

	mm	mm	mm	mm	mm	mm	mm
05078690001	14x18	13	25,5	62,0	37,0	30,0	11,0
05078691001	14x18	14	25,5	62,0	37,0	30,0	11,0
05078692001	14x18	15	25,5	62,0	37,0	30,0	11,0
05078693001	14x18	16	25,5	64,0	39,0	28,0	12,0
05078694001	14x18	17	25,5	64,0	39,0	28,0	12,0
05078695001	14x18	18	25,5	64,0	39,0	28,0	12,0
05078696001	14x18	19	25,5	64,0	39,0	28,0	12,0
05078697001	14x18	21	25,5	64,0	39,0	28,0	12,0
05078698001	14x18	22	25,5	64,0	39,0	28,0	12,0
05078699001	14x18	24	25,5	64,0	39,0	28,0	12,0
05078700001	14x18	27	25,5	81,0	56,0	53,0	21,0
05078701001	14x18	30	25,5	81,0	56,0	53,0	21,0
05078702001	14x18	32	25,5	81,0	56,0	53,0	21,0
05078703001	14x18	34	28,0	81,0	56,0	53,0	21,0
05078704001	14x18	36	28,0	81,0	56,0	53,0	21,0
05078705001	14x18	41	30,0	81,0	56,0	53,0	21,0

7772 A Ratchet insert, reversible, 9x12 mm



Application: For 1/4" square socket wrench inserts and 1/4" connecting parts with square drive

Drive: 9x12 mm; for torque wrenches of the Click-Torque X and XP series with 9x12 mm holder

Design: With reversing ratchet, push-button release, forged, chrome-vanadium steel, matt chrome-plated; with safety pin

	mm	mm	mm	mm	mm	mm	mm
05078635001	9x12	1/4"	17,5	49,0	32,0	28,0	15,0

7772 B Ratchet insert, reversible, 9x12 mm



Application: For 3/8" square socket wrench inserts and 3/8" connecting parts with square drive

Drive: 9x12 mm; for torque wrenches of the Click-Torque X and XP series with 9x12 mm holder

Design: With reversing ratchet, push-button release, forged, chrome-vanadium steel, matt chrome-plated; with safety pin

	mm	mm	mm	mm	mm	mm	mm
05078636001	9x12	3/8"	17,5	52,0	35,0	35,0	21,0

7772 C Ratchet insert, reversible, 9x12 mm



Application: For 1/2" square socket wrench inserts and 1/2" connecting parts with square drive

Drive: 9x12 mm; for torque wrenches of the Click-Torque X and XP series with 9x12 mm holder

Design: With reversing ratchet, push-button release, forged, chrome-vanadium steel, matt chrome-plated; with safety pin

	mm	mm	mm	mm	mm	mm	mm
05078637001	9x12	1/2"	20,0	58,0	41,0	42,0	23,0

7782 C Ratchet insert, reversible, 14x18 mm



Application: For 1/2" square socket wrench inserts and 1/2" connecting parts with square drive

Drive: 14x18 mm; for torque wrenches of the Click-Torque X and XP series with 14x18 mm holder

Design: With reversing ratchet, push-button release, forged, chrome-vanadium steel, matt chrome-plated; with safety pin

	mm	mm	mm	mm	mm	mm	mm
05078707001	14x18	1/2"	20,0	66,0	41,0	42,0	23,0

7782 E Ratchet insert, reversible, 14x18 mm



Application: For $\frac{3}{4}$ " square socket wrench inserts and $\frac{3}{4}$ " connecting parts with square drive

Drive: 14x18 mm; for torque wrenches of the Click-Torque X and XP series with 14x18 mm holder

Design: With reversing ratchet, push-button release, forged, chrome-vanadium steel, matt chrome-plated; with safety pin

	mm	mm	mm	mm	mm	mm	mm
05078708001	14x18	$\frac{3}{4}$ "	30,0	90,0	65,0	65,0	36,0

7773 A Square drive insert, 9x12 mm



Application: For $\frac{1}{4}$ " square socket wrench inserts and $\frac{1}{4}$ " connecting parts with square drive

Drive: 9x12 mm; for torque wrenches of the Click-Torque X and XP series with 9x12 mm holder

Design: Forged, chrome-vanadium steel, matt chrome-plated; with safety pin

	mm	mm	mm	mm	mm	mm	mm
05078200001	9x12	$\frac{1}{4}$ "	17,5	44,0	28,0	21,0	14,0

7773 B Square drive insert, 9x12 mm



Application: For $\frac{3}{8}$ " square socket wrench inserts and $\frac{3}{8}$ " connecting parts with square drive

Drive: 9x12 mm; for torque wrenches of the Click-Torque X and XP series with 9x12 mm holder

Design: Forged, chrome-vanadium steel, matt chrome-plated; with safety pin

	mm	mm	mm	mm	mm	mm	mm
05078205001	9x12	$\frac{3}{8}$ "	17,5	44,0	28,0	21,0	14,0

7773 C Square drive insert, 9x12 mm



Application: For $\frac{1}{2}$ " square socket wrench inserts and $\frac{1}{2}$ " connecting parts with square drive

Drive: 9x12 mm; for torque wrenches of the Click-Torque X and XP series with 9x12 mm holder

Design: Forged, chrome-vanadium steel, matt chrome-plated; with safety pin

	mm	mm	mm	mm	mm	mm	mm
05078210001	9x12	$\frac{1}{2}$ "	17,5	44,0	28,0	21,0	14,0

7783 C Square drive insert, 14x18 mm



Application: For 1/2" square socket wrench inserts and 1/2" connecting parts with square drive
Drive: 14x18 mm; for torque wrenches of the Click-Torque X and XP series with 14x18 mm holder
Design: Forged, chrome-vanadium steel, matt chrome-plated; with safety pin

	mm	mm	mm	mm	mm	mm	mm
05078345001	14x18	1/2"	25,5	65,0	40,0	30,0	18,0

7783 E Push-through square insert tool, 14x18 mm



Application: For 3/4" square socket wrench inserts and 3/4" connecting parts with square drive
Drive: 14x18 mm; for torque wrenches of the Click-Torque X and XP series with 14x18 mm holder
Design: With push-through square with ball lock, forged, chrome-vanadium steel, matt chrome-plated; with safety pin

	mm	mm	mm	mm	mm	mm	mm
05078710001	14x18	3/4"	25,5	70,0	45,0	40,0	25,0

7774/1 Bit adapter insert, 1/4", 9x12 mm



Application: Suitable for 1/4" DIN ISO 1173-C 6,3 hexagon insert bits and Wera Series 1
Drive: 9x12 mm; for torque wrenches of the Click-Torque X and XP series with 9x12 mm holder
Design: Forged, chrome-vanadium steel, matt chrome-plated; with safety pin

	mm	mm	mm	mm	mm	mm	mm
05078640001	9x12	1/4"	17,5	42,0	25,0	22,0	12,5

7774/2 Bit adapter insert, 5/16", 9x12 mm



Application: Suitable for 5/16" DIN ISO 1173-E 8 hexagon insert bits and Wera Series 2
Drive: 9x12 mm; for torque wrenches of the Click-Torque X and XP series with 9x12 mm holder
Design: Forged, chrome-vanadium steel, matt chrome-plated; with safety pin

	mm	mm	mm	mm	mm	mm	mm
05078641001	9x12	5/16"	17,5	42,0	25,0	22,0	12,5




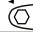



7774/3 Bit adapter insert, 5/16", 14x18 mm



Application: Suitable for 5/16" DIN ISO 1173-E 8 hexagon insert bits and Wera Series 2

Drive: 14x18 mm; for torque wrenches of the Click-Torque X and XP series with 14x18 mm holder

Design: Forged, chrome-vanadium steel, matt chrome-plated; with safety pin

							
	mm	mm	mm	mm	mm	mm	mm
05078642001	14x18	5/16"	25,5	58,0	33,0	30,0	13,0

7776 External TORX® insert, 9x12 mm



A Form

05078660001
05078661001
05078662001
05078663001



B Form








05078664001



Application: External TORX® screws

Drive: 9x12 mm; for torque wrenches of the Click-Torque X and XP series with 9x12 mm holder

Design: Forged, chrome-vanadium steel, matt chrome-plated; with safety pin

							
	mm		mm	mm	mm	mm	mm
05078660001	9x12	TX 6	17,5	40,0	23,0	22,0	8,0
05078661001	9x12	TX 8	17,5	40,0	23,0	22,0	8,0
05078662001	9x12	TX 10	17,5	40,0	23,0	22,0	8,0
05078663001	9x12	TX 12	17,5	40,0	23,0	22,0	8,0
05078664001	9x12	TX 14	17,5	45,0	28,0	22,0	11,0

7786 External TORX® insert, 14x18 mm



A Form

05078714001
05078715001



B Form







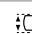
05078716001
05078717001



Application: External TORX® screws

Drive: 14x18 mm; for torque wrenches of the Click-Torque X and XP series with 14x18 mm holder

Design: Forged, chrome-vanadium steel, matt chrome-plated; with safety pin

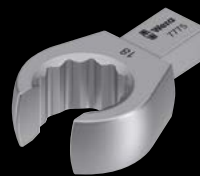
							
	mm		mm	mm	mm	mm	mm
05078714001	14x18	TX 14	25,5	37,0	62,0	30,0	11,0
05078715001	14x18	TX 18	25,5	37,0	62,0	30,0	11,0
05078716001	14x18	TX 20	25,5	40,0	65,0	32,0	12,0
05078717001	14x18	TX 24	25,5	40,0	65,0	32,0	12,0

7775 Open ring spanner insert, 9x12 mm



A Form

05078650001
05078651001
05078652001
05078653001
05078654001
05078655001



B Form

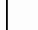





05078656001
05078657001
05078658001



Application: Hexagon screw heads or nuts

Drive: 9x12 mm; for torque wrenches of the Click-Torque X and XP series with 9x12 mm holder

Design: Forged, chrome vanadium steel, matt chrome plated; with safety pin

							
	mm	mm	mm	mm	mm	mm	mm
05078650001	9x12	10	17,5	44,0	27,0	22,0	11,0
05078651001	9x12	11	17,5	44,0	27,0	22,0	11,0
05078652001	9x12	12	17,5	44,0	27,0	22,0	11,0
05078653001	9x12	13	17,5	44,0	27,0	22,0	11,0
05078654001	9x12	14	17,5	44,0	27,0	22,0	11,0
05078655001	9x12	17	17,5	44,0	27,0	22,0	11,0
05078656001	9x12	18	17,5	49,0	32,0	33,0	15,0
05078657001	9x12	19	17,5	49,0	32,0	33,0	15,0
05078658001	9x12	22	17,5	49,0	32,0	33,0	15,0

7779/1 Adapter insert, 9x12 mm



Application: For the use of square plug-in tools 14x18 mm in torque wrenches with internal square 9x12 mm

Drive: 9x12 mm; for torque wrenches of the Click-Torque X and XP series with 9x12 mm holder

Design: Forged, chrome vanadium steel, matt chrome plated; with safety pin

						
	mm	mm	mm	mm	mm	mm
05078666001	9x12	14x18	49,0	33,0	32,0	26,0

7779/2 Adapter insert, 14x18 mm



Application: For the use of square plug-in tools 9x12 mm in torque wrenches with internal square 14x18 mm

Drive: 14x18 mm; for torque wrenches of the Click-Torque X and XP series with 14x18 mm holder

Design: Forged, chrome vanadium steel, matt chrome plated; with safety pin

						
	mm	mm	mm	mm	mm	mm
05078667001	14x18	9x12	52,0	27,0	28,0	21,0

7790/1 Push-fit weld-on adapter, 9x12 mm



Application: For welding on specifically required tools

Drive: 9x12 mm; for torque wrenches of the Click-Torque X and XP series with 9x12 mm holder

Design: Forged, phosphated, with safety pin

					
	mm	mm	mm	mm	mm
05078720001	9x12	24,0	8,0	22,0	14,0

7790/2 Push-fit weld-on adapter, 14x18 mm



Application: For welding on specifically required tools

Drive: 14x18 mm; for torque wrenches of the Click-Torque X and XP series with 14x18 mm holder

Design: Forged, phosphated, with safety pin

					
	mm	mm	mm	mm	mm
05078721001	14x18	38,0	13,0	31,0	22,0

Push-fit weld-on adapter



For welding on specifically required tools; for torque wrenches of the Click-Torque X and XP series.

Welding should ideally be carried out by a specialist welding company.



7762 Click-Torque collar M3



Click-Torque collar as an accessory for Click-Torque Torque wrenches B 1, B 2, C 1, C 2, C 3, C 4, X 2, X 3, X 4, X 5, XP 4, Click-Torque Push R/L C 2 and Click-Torque Push R/L C 3.

	mm	mm	mm
05078709001	55,0	55,0	21,5

7761 Click-Torque collar M4



Click-Torque collar as an accessory for Click-Torque Torque wrenches C 5 and X 6.

	mm	mm	mm
05078706001	55,0	55,0	21,5

7763 Click-Torque collar M5



Click-Torque collar as an accessory for Click-Torque Torque wrench E 1 and Click-Torque Push R/L E 1.

	mm	mm	mm
05078711001	73,0	73,0	27,0

Click-Torque collar



The Click-Torque collar is placed around the tube of the Wera Click-Torque torque wrench. It prevents the handle from touching the ground. Dirt and damage are avoided. Also serves as "anti-roll protection".

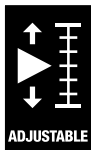




Adjustable Torque Screwdrivers



Wera's adjustable torque screwdrivers allow variable torque settings with maximum precision and ensure that the user gets the very best results in the familiar Wera design with superior ergonomics.



Simple setting



Simple setting of the required torque by hand.

Easy-to-read



Easy-to-read scale value.

Attachable magnifying glass



Articles 7430, 7431 and 7432 all come with a magnifying glass. This can be easily attached on to the scale, dramatically improving visibility.

Series 7400 Kraftform adjustable torque screwdrivers (0.1-3.0 Nm) with Rapidaptor quick-release chuck



Application: Suitable for 1/4" DIN ISO 1173-C 6.3 and E 6.3 hexagon insert bits and Wera Series 1 and 4

Design: Rapidaptor rapid-in, rapid-out, rapid-spin, chuck-all and single-hand technology

Accuracy: ±6 % (DIN EN ISO 6789). Numerical torque valuescale. Reliable slipping mechanism and acoustic signal when reaching the set torque.

Handle: Kraftform with non-roll feature, multi-component

	Art.No.	1/4"	Nm	Nm	mm	mm	mm
05074770001 ¹⁾	7430	1/4"	0,10-0,34	0,015	89	142	5 7/16"
05074772001 ¹⁾	7431	1/4"	0,30-1,00	0,05	89	142	5 7/16"
05074774001 ¹⁾	7432	1/4"	0,90-1,50	0,05	89	142	5 7/16"
05074700001	7440	1/4"	0,3-1,2	0,05	105	155	6"
05074701001	7441	1/4"	1,2-3,0	0,10	105	155	6"

¹⁾ With attachable magnifying glass, dramatically improving visibility.

Series 7400 Kraftform adjustable torque screwdrivers (2.5-29.0 in. lbs.) with Rapidaptor quick-release chuck



Application: Suitable for 1/4" DIN ISO 1173-C 6.3 and E 6.3 hexagon insert bits and Wera Series 1 and 4

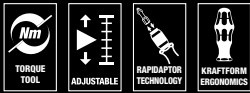
Design: Rapidaptor rapid-in, rapid-out, rapid-spin, chuck-all and single-hand technology

Accuracy: ±6 % (DIN EN ISO 6789). Numerical torque value scale. Reliable slipping mechanism and acoustic signal when reaching the set torque.

Handle: Kraftform with non-roll feature, multi-component

	Art.No.	1/4"	in. lbs.	in. lbs.	mm	mm	mm
05074710001	7445	1/4"	2,5-11,5	0,5	105	155	6"
05074711001	7446	1/4"	11,0-29,0	1,0	105	155	6"

Series 7400 Kraffform pistol handle, adjustable torque screwdrivers (3.0-8.8 Nm) with Rapidaptor quick-release chuck



Application: Suitable for 1/4" DIN ISO 1173-C 6.3 and E 6.3 hexagon insert bits and Wera Series 1 and 4

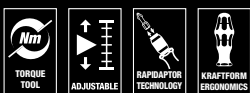
Design: Rapidaptor rapid-in, rapid-out, rapid-spin, chuck-all and single-hand technology

Accuracy: ±6 % (DIN EN ISO 6789). Numerical torque value scale. Reliable slipping mechanism and acoustic signal when reaching the set torque.

Handle: Kraffform pistol grip, multi-component

	Art.No.	Nm	Nm	mm	mm	mm	mm
05074702001	7442	1/4"	3,0-6,0	0,25	150	100	4"
05074705001	7443	1/4"	4,0-8,8	0,40	150	100	4"

Series 7400 Kraffform pistol handle, adjustable torque screwdrivers (25.0-55.0 in. lbs.) with Rapidaptor quick-release chuck



Application: Suitable for 1/4" DIN ISO 1173-C 6.3 and E 6.3 hexagon insert bits and Wera Series 1 and 4

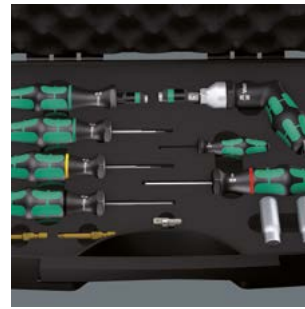
Design: Rapidaptor rapid-in, rapid-out, rapid-spin, chuck-all and single-hand technology

Accuracy: ±6 % (DIN EN ISO 6789). Numerical torque value scale. Reliable slipping mechanism and acoustic signal when reaching the set torque.

Handle: Kraffform pistol grip, multi-component

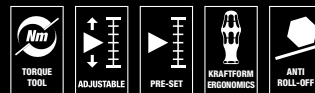
	Art.No.	in. lbs.	in. lbs.	mm	mm	mm	mm
05074712001	7447	1/4"	25,0-55,0	2,5	150	100	4"

Assembly sets for tyre control systems



Suitable for all leading system suppliers like Alligator, Beru, CUB, Herth & Buss, Schrader, VDO/Conti. Including adjustable and pre-set torque tools, colour-coded valve insertion tool and valve dolly. The robust foam insert provides for a practical arrangement system.

7443/12 Assembly set for tyre pressure control systems



Suitable for all leading system suppliers such as Alligator, Beru, CUB, Herth & Buss, Schrader, VDO/Conti.

1 adjustable torque screwdriver, pistol handle, 4.0-8.8 Nm; 1 pre-set torque screwdriver 3.3 Nm
 1 pre-set torque screwdriver 1.4 Nm TX 10; 1 pre-set torque screwdriver 1.25 Nm TX 10; 1 valve dolly; 1 bit 867/4 HF TX 15 x 50 mm, with holding function for TORX® screws; 1 bit 867/4 HF TX 20 x 50 mm, with holding function for TORX® screws; 1 socket 790 A/50 SW 11.0 x 50 mm
 1 socket 790 A/50 SW 12.0 x 50 mm; 1 adaptor 870/1; 1/4" hexagon to 1/4" square; 1 valve insertion tool, pre-set torque: 0.25 Nm; 1 valve insertion tool, pre-set torque: 0.45 Nm.

Practically arranged in a robust foam insert.

05074746001		
	7400 pistol grip	1x 7443, 4,0-8,8 Nm
	Series 7400 Kraffform torque screwdrivers with a factory pre-set measurement value	1x 7464, 3,3 Nm, 3,0-6,0 Nm
	300 TX	1x TX 10x1,25; 1x TX 10x1,4
	790 A/50	1x 11,0x50,0; 1x 12,0x50,0
	867/4 TORX® HF	1x TX 15x50; 1x TX 20x50
	870/1	1x 1/4"x25 ¹⁾
	300 V	1x 0,25; 1x 0,45
	327	1x 32x70

¹⁾ With friction ball; for manual nut spinner sockets

7440/41/42 Kraffform torque screwdriver set 0.3-6.0 Nm



05074739001		
●	7400	1x 7440, 0,3-1,2 Nm; 1x 7441, 1,2-3,0 Nm
●	7400 pistol grip	1x 7442, 3,0-6,0 Nm
⊕	867/1 TZ TORX®	1x TX 6x25; 1x TX 7x25; 1x TX 8x25; 1x TX 9x25; 1x TX 10x25; 1x TX 15x25; 1x TX 20x25; 1x TX 25x25; 1x TX 30x25
⊕	867/1 IP TORX PLUS®	1x 6 IPx25; 1x 7 IPx25; 1x 8 IPx25; 1x 9 IPx25; 1x 10 IPx25; 1x 15 IPx25; 1x 20 IPx25; 1x 25 IPx25; 1x 30 IPx25
○	840/1 Z	1x 2,0x25; 1x 2,5x25; 1x 3,0x25; 1x 4,0x25; 1x 5,0x25; 1x 6,0x25

7445/46/47 Kraffform torque screwdriver set 2.5-55.0 in.lbs.



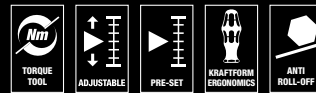
05350451001		
●	7400 Imperial	1x 7445, 2,5-11,5 in, lbs.; 1x 7446, 11,0-29,0 in, lbs,
●	7400 Imperial pistol grip	1x 7447, 25,0-55,0 in, lbs,
⊕	867/1 TZ TORX®	1x TX 6x25; 1x TX 7x25; 1x TX 8x25; 1x TX 9x25; 1x TX 10x25; 1x TX 15x25; 1x TX 20x25; 1x TX 25x25; 1x TX 30x25
⊕	867/1 IP TORX PLUS®	1x 6 IPx25; 1x 7 IPx25; 1x 8 IPx25; 1x 9 IPx25; 1x 10 IPx25; 1x 15 IPx25; 1x 20 IPx25; 1x 25 IPx25; 1x 30 IPx25
○	840/1 Z	1x 2,0x25; 1x 2,5x25; 1x 3,0x25; 1x 4,0x25; 1x 5,0x25; 1x 6,0x25

7440/41 Kraffform torque screwdriver set 0.3-3.0 Nm



05074738001		
●	7400	1x 7440, 0,3-1,2 Nm; 1x 7441, 1,2-3,0 Nm
⊕	867/1 TZ TORX®	1x TX 6x25; 1x TX 7x25; 1x TX 8x25; 1x TX 9x25; 1x TX 10x25; 1x TX 15x25; 1x TX 20x25; 1x TX 25x25; 1x TX 30x25
⊕	867/1 IP TORX PLUS®	1x 6 IPx25; 1x 7 IPx25; 1x 8 IPx25; 1x 9 IPx25; 1x 10 IPx25; 1x 15 IPx25; 1x 20 IPx25; 1x 25 IPx25; 1x 30 IPx25
○	840/1 Z	1x 2,0x25; 1x 2,5x25; 1x 3,0x25; 1x 4,0x25; 1x 5,0x25; 1x 6,0x25

7443/6/1/9 Assembly set for tyre pressure control systems



05074745001		
●	Series 7400 Kraffform torque screwdrivers with a factory pre-set measurement value	1x 7461, 1,2 Nm, 1,2-3,0 Nm ¹⁾
●	7400 pistol grip	1x 7443, 4,0-8,8 Nm
⊕	300 TX	1x TX 10x1,4
○	870/1	1x 1/4"x25 ²⁾
●	790 A/50	1x 11,0x50,0; 1x 12,0x50,0
⊕	867/4 TORX® HF	1x TX 15x50; 1x TX 20x50
○	327	1x 32x70

¹⁾ The preset torque can be changed. However, this requires the use of special tools and Torque Test Equipment. Please contact the Wera Torque Service.

²⁾ With friction ball; for manual nut spinner sockets

889/4/1 F Rapidaptor free-running bit holder for torque screwdrivers with pistol handle



Tip: Suitable for bits with 1/4" - external hexagon drive as per DIN ISO 1173-C 6.3 and E 6.3 and Wera connection series 1 and 4

Design: With free-running feature for particularly quick return movement, without having to remove the screwdriver when tightening screws. Especially suitable for the applications with Wera torque screwdrivers with pistol handle in the 7400 range. Rapidaptor technology with rapid-in, rapid-out, rapid-spin, chuck-all and single-hand functions, with strong permanent magnet

Drive: 1/4"-hexagon, suitable for mounting as per DIN ISO 1173-F 6.3

	mm	mm	mm	mm	mm
05052501001	1/4"	64	2 33/64"	1/4"	16,5

7400 series Kraftform Torque screwdrivers, with factory pre-set value (0.1-1.5 Nm) and Rapidaptor quick-release chuck, handle size 89 mm



Application: Suitable for 1/4" DIN ISO 1173-C 6.3 and E 6.3 hexagon insert bits and Wera Series 1 and 4

Design: Rapidaptor rapid-in, rapid-out, rapid-spin, chuck-all and single-hand technology

Pre-set torque: 0.1 Nm, 0.3 Nm, 0.9 Nm

Accuracy: ± 6% (DIN EN ISO 6789). Reliable slipping mechanism and acoustic signal when reaching the set torque.

Handle: Kraftform with non-roll feature, multi-component

	Art.No.	Nm	Nm	mm	mm	mm
05074790001 ¹⁾	7450	1/4"	0,1	0,1-0,34	89	133 5 1/4"
05074792001 ¹⁾	7451	1/4"	0,3	0,3-1,0	89	133 5 1/4"
05074794001 ¹⁾	7452	1/4"	0,9	0,9-1,5	89	133 5 1/4"

¹⁾ The preset torque can be changed. However, this requires the use of special tools and Torque Test Equipment. Please contact the Wera Torque Service.

889/4/1 F Rapidaptor free-running bit holder



Especially for applications with Wera torque screwdrivers with pistol handle for fast and ergonomic working.

The free-running feature



The free-running feature allows for particularly quick return movement without having to remove the screwdriver when tightening screws.

Magnetic



Magnetic bit holder for easier application of the screw.

Unlimited torque



Unlimited torque for loosening seized screws.

Kraftform handle



Multi-component Kraftform handle with hard and soft zones for fast working speeds and protecting the palm of the hand.

7400 series Kraftform Torque screwdrivers, with factory pre-set value (0.3-3.0 Nm) and Rapidaptor quick-release chuck, handle size 105 mm



Application: Suitable for 1/4" DIN ISO 1173-C 6.3 and E 6.3 hexagon insert bits and Wera Series 1 and 4

Design: Rapidaptor rapid-in, rapid-out, rapid-spin, chuck-all and single-hand technology

Pre-set torque: 0.3 Nm, 1.2 Nm

Accuracy: ± 6% (DIN EN ISO 6789). Reliable slipping mechanism and acoustic signal when reaching the set torque.

Handle: Kraftform with non-roll feature, multi-component

	Art.No.						
			Nm	Nm	mm	mm	in.
05074715001 ¹⁾	7460	1/4"	0,3	0,3-1,2	105	155	6"
05074716001 ¹⁾	7461	1/4"	1,2	1,2-3,0	105	155	6"

¹⁾ The preset torque can be changed. However, this requires the use of special tools and Torque Test Equipment. Please contact the Wera Torque Service.

7400 series Kraftform Torque screwdrivers, with factory pre-set value (3.0-8.8 Nm) and Rapidaptor quick-release chuck, pistol handle



Application: Suitable for 1/4" DIN ISO 1173-C 6.3 and E 6.3 hexagon insert bits and Wera Series 1 and 4

Design: Rapidaptor rapid-in, rapid-out, rapid-spin, chuck-all and single-hand technology

Pre-set torque: 3.0 Nm, 4.0 Nm

Accuracy: ±6% (DIN EN ISO 6789). Reliable slipping mechanism and acoustic signal when reaching the set torque.

Handle: Kraftform pistol grip, multi-component

	Art.No.							
			Nm	Nm	mm	mm	mm	mm
05074717001 ¹⁾	7462	1/4"	3,0	3,0-6,0	150	100	6"	4"
05074728001 ¹⁾	7463	1/4"	4,0	4,0-8,8	150	100	6"	4"

¹⁾ The preset torque can be changed. However, this requires the use of special tools and Torque Test Equipment. Please contact the Wera Torque Service.

7400 Imperial series Kraftform Torque screwdrivers, with factory pre-set value (2.5-29.0 in. lbs.) and Rapidaptor quick-release chuck, handle size 105 mm



Application: Suitable for 1/4" DIN ISO 1173-C 6.3 and E 6.3 hexagon insert bits and Wera Series 1 and 4

Design: Rapidaptor rapid-in, rapid-out, rapid-spin, chuck-all and single-hand technology

Pre-set torque: 2.5 in.lbs., 11.0 in.lbs.

Accuracy: ±6% (DIN EN ISO 6789). Reliable slipping mechanism and acoustic signal when reaching the set torque.

Handle: Kraftform with non-roll feature, multi-component

	Art.No.						
			in. lbs.	in. lbs.	mm	mm	in.
05074720001 ¹⁾	7465	1/4"	2,5	2,5-11,5	105	155	6"
05074722001 ¹⁾	7466	1/4"	11,0	11,0-29,0	105	155	6"

¹⁾ The preset torque can be changed. However, this requires the use of special tools and Torque Test Equipment. Please contact the Wera Torque Service.

7400 Imperial series Kraftform Torque screwdrivers, with factory pre-set value (25.0-55.0 in. lbs.) and Rapidaptor quick-release chuck, pistol handle



Application: Suitable for 1/4" DIN ISO 1173-C 6.3 and E 6.3 hexagon insert bits and Wera Series 1 and 4

Design: Rapidaptor rapid-in, rapid-out, rapid-spin, chuck-all and single-hand technology

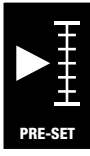
Pre-set torque: 25.0 in. lbs.

Accuracy: ±6% (DIN EN ISO 6789). Reliable slipping mechanism and acoustic signal when reaching the set torque.

Handle: Kraftform pistol grip, multi-component

	Art.No.						
			in. lbs.	in. lbs.	mm	mm	mm
05074721001 ¹⁾	7467	1/4"	25,0	25,0-55,0	150	100	6"

¹⁾ The preset torque can be changed. However, this requires the use of special tools and Torque Test Equipment. Please contact the Wera Torque Service.



Customised pre-setting



The pre-set torque screwdrivers 7400, 1460, 1461 with a pre-set torque value can be set to any value within the specified metered range in the test laboratory.

Series 7400 Kraftform torque screwdrivers with a customised factory pre-set measurement value, handle size 105 mm



Application: Suitable for 1/4" DIN ISO 1173-C 6.3 and E 6.3 hexagon insert bits and Wera Series 1 and 4

Design: Rapidaptor rapid-in, rapid-out, rapid-spin, chuck-all and single-hand technology

Pre-set torque: Adjustable to customer requirements within the specified measurement range

Accuracy: ± 6% (DIN EN ISO 6789). Reliable slipping mechanism and acoustic signal when reaching the set torque.

Handle: Kraftform with non-roll feature, multi-component

	Art.No.	Nm	mm	mm	mm		
	05074715010	7460	1/4"	0,3-1,2	105	155	6"
	05074716010	7461	1/4"	1,2-3,0	105	155	6"

^{*)} The desired settings can be made in the following units: Nm, kgf. m, lbf. ft., ozf. in., dN. m, kgf. cm, lbf. in, in. oz, cN. m, gf. m, ft. lb, gf. cm, in. lb.

Series 7400 Kraftform torque screwdrivers with a customised factory pre-set measurement value, handle size 89 mm



Application: Suitable for 1/4" DIN ISO 1173-C 6.3 and E 6.3 hexagon insert bits and Wera Series 1 and 4

Design: Rapidaptor rapid-in, rapid-out, rapid-spin, chuck-all and single-hand technology

Pre-set torque: Adjustable to customer requirements within the specified measurement range

Accuracy: ± 6% (DIN EN ISO 6789). Reliable slipping mechanism and acoustic signal when reaching the set torque.

Handle: Kraftform with non-roll feature, multi-component

	Art.No.	Nm	mm	mm	mm		
	05074790010	7450	1/4"	0,1-0,34	89	133	5 1/4"
	05074792010	7451	1/4"	0,3-1,0	89	133	5 1/4"
	05074794010	7452	1/4"	0,9-1,5	89	133	5 1/4"

^{*)} The desired settings can be made in the following units: Nm, kgf. m, lbf. ft., ozf. in., dN. m, kgf. cm, lbf. in, in. oz, cN. m, gf. m, ft. lb, gf. cm, in. lb.

Series 7400 Imperial Kraftform torque screwdrivers with a customised factory pre-set measurement value, handle size 105 mm



Application: Suitable for 1/4" DIN ISO 1173-C 6.3 and E 6.3 hexagon insert bits and Wera Series 1 and 4

Design: Rapidaptor rapid-in, rapid-out, rapid-spin, chuck-all and single-hand technology

Pre-set torque: Adjustable to customer requirements within the specified measurement range

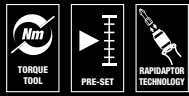
Accuracy: ± 6% (DIN EN ISO 6789). Reliable slipping mechanism and acoustic signal when reaching the set torque.

Handle: Kraftform with non-roll feature, multi-component

	Art.No.	in. lbs.	mm	mm	mm		
	05074720010	7465	1/4"	2,5-11,5	105	155	6"
	05074722010	7466	1/4"	11,0-29,0	105	155	6"

^{*)} The desired settings can be made in the following units: Nm, kgf. m, lbf. ft., ozf. in., dN. m, kgf. cm, lbf. in, in. oz, cN. m, gf. m, ft. lb, gf. cm, in. lb.

Series 7400 Kraftform torque screwdrivers with a customised factory pre-set measurement value, pistol handle



Application: Suitable for 1/4" DIN ISO 1173-C 6.3 and E 6.3 hexagon insert bits and Wera Series 1 and 4

Design: Rapidaptor rapid-in, rapid-out, rapid-spin, chuck-all and single-hand technology

Pre-set torque: Adjustable to customer requirements within the specified measurement range

Accuracy: ±6 % (DIN EN ISO 6789). Reliable slipping mechanism and acoustic signal when reaching the set torque.

Handle: Kraftform pistol grip, multi-component

	Art.No.	Nm	mm	mm	mm	mm	mm
05074717010	7462	1/4"	3,0-6,0	150	100	6"	4"
05074728010	7463	1/4"	4,0-8,8	150	100	6"	4"

^{*)} The desired settings can be made in the following units: Nm, kgf. m, lbf. ft., ozf. in., dN. m, kgf. cm, lbf. in, in. oz, cN. m, gf. m, ft. lb, gf. cm, in. lb.

Series 7400 Imperial Kraftform torque screwdrivers with a customised factory pre-set measurement value, pistol handle



Application: Suitable for 1/4" DIN ISO 1173-C 6.3 and E 6.3 hexagon insert bits and Wera Series 1 and 4

Design: Rapidaptor rapid-in, rapid-out, rapid-spin, chuck-all and single-hand technology

Pre-set torque: Adjustable to customer requirements within the specified measurement range

Accuracy: ±6 % (DIN EN ISO 6789). Reliable slipping mechanism and acoustic signal when reaching the set torque.

Handle: Kraftform pistol grip, multi-component

	Art.No.	in. lbs.	mm	mm	mm	mm	mm
05074721010	7467	1/4"	25,0-55,0	150	100	6"	4"

^{*)} The desired settings can be made in the following units: Nm, kgf. m, lbf. ft., ozf. in., dN. m, kgf. cm, lbf. in, in. oz, cN. m, gf. m, ft. lb, gf. cm, in. lb.

Pre-set, adjustable torque screwdrivers



These torque screwdrivers are supplied with a fixed pre-set torque value. This is ideal for all applications that require constant, identical torque. They feature a pre-set torque range of 0.3 Nm to 4.0 Nm (adjustable between 0.3 Nm – 8.8 Nm), two different handles, measurement accuracy of ± 6 % and Rapidaptor chuck

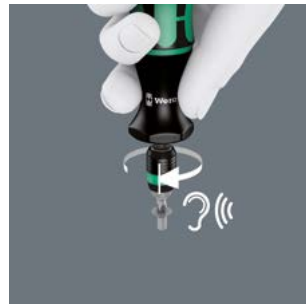
technology for rapid bit change.

Unlimited torque



Unlimited torque for loosening seized screws.

Excess-load signal



Distinctly audible and noticeable excess-load signal when the pre-set torque is reached.



Single-hand function



Every function of the Rapidaptor quick-release chuck, such as inserting or releasing bits, can be carried out with one hand. This is faster, more economical and more ergonomic. There are no unnecessary manoeuvres.

What are ESD tools?

ESD tools are special tools made of materials that divert static electricity to prevent sudden electrostatic discharge.

They are used to protect sensitive electronic components from electrostatic discharge.

Electrostatic discharges can occur when handling sensitive electronic components, leading to damage or even complete failure.

By using ESD-compliant tools in combination with ESD-compliant workplaces, electronics manufacturers can ensure that their products function reliably and error-free.



1430 ESD Kraftform Micro adjustable torque screwdrivers (0.02-0.11 Nm) with quick-release chuck



Application: Suitable for bits with 4 mm Halfmoon drive (and Wera Serie 9) and 4 mm HIOS drive (and Wera Series 21)

Design: With quick-release chuck for rapid bit change

Accuracy: ± 10%. Numerical torque value scale, audible excess-load signal

Handle: Kraftform Micro with non-roll feature and rotating cap, multi-component

	Art.No.	Nm	Nm	mm	
05074802001 ¹⁾	1430 ESD	0.02-0.06	0,0025	141	5 7/16"
05074804001 ¹⁾	1431 ESD	0.05-0.11	0,005	141	5 7/16"

¹⁾ With attachable magnifying glass, dramatically improving visibility.

1460 ESD Kraftform Micro torque screwdrivers, with factory pre-set value (0.02-0.11 Nm) and quick-release chuck



Application: Suitable for bits with 4 mm Halfmoon drive (and Wera Serie 9) and 4 mm HIOS drive (and Wera Series 21)

Design: With quick-release chuck for rapid bit change

Pre-set torque: 0,035 Nm, 0,05 Nm

Accuracy: ± 10%. Reliable slipping mechanism and acoustic signal when reaching the set torque.

Handle: Kraftform Micro with non-roll feature and rotating cap, multi-component

	Art.No.	Nm	Nm	mm	
05074800001 ¹⁾	1460 ESD	0,035	0.02-0.06	131	5 1/4"
05074810001 ¹⁾	1461 ESD	0,050	0.05-0.11	131	5 1/4"

¹⁾ The preset torque can be changed. However, this requires the use of special tools and Torque Test Equipment. Please contact the Wera Torque Service.



1460 ESD Kraftform Micro torque screwdrivers with a customised factory pre-set measurement value with quick-release chuck



Application: Suitable for bits with 4 mm Halfmoon drive (and Wera Serie 9) and 4 mm HIOS drive (and Wera Serie 21)

Design: With quick-release chuck for rapid bit change

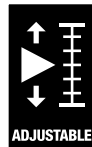
Pre-set torque: Adjustable to customer requirements within the specified measurement range

Accuracy: ± 10%. Reliable slipping mechanism and acoustic signal when reaching the set torque.

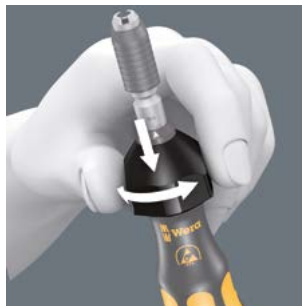
Handle: Kraftform Micro with non-roll feature and rotating cap, multi-component

	Art.No.	Nm	mm	mm
05074800010	1460 ESD 0,02-0,06	131	5	1/4"
05074810010	1461 ESD 0,05-0,11	131	5	1/4"

¹⁾ The desired settings can be made in the following units: Nm, kgf. m, lbf. ft., ozf. in., dN. m, kgf. cm, lbf. in., in. oz, cN. m, gf. m, ft. lb, gf. cm, in. lb.



Simple setting



Simple setting of the required torque by hand.

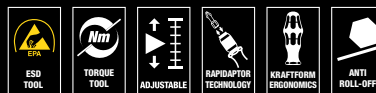


High protection



The electric surface resistance of the Wera ESD material is ≤ 10⁹ ohm. This securely protects components against electrostatic energy and associated damage.

Series 7400 ESD Kraftform adjustable torque screwdrivers (0.1-3.0 Nm) with Rapidaptor quick-release chuck



Application: Suitable for 1/4" DIN ISO 1173 C 6.3 and E 6.3 hexagon insert bits and Wera Series 1 and 4

Design: Rapidaptor rapid-in, rapid-out, rapid-spin, chuck-all and single-hand technology, non-magnetic

Accuracy: ±6 % (DIN EN ISO 6789). Numerical torque value scale. Reliable slipping mechanism and acoustic signal when reaching the set torque.

Handle: Kraftform with non-roll feature, multi-component

	Art.No.	Nm	Nm	mm	mm	mm
05074780001 ¹⁾	7430 ESD	1/4"	0,10-0,34	0,015	89	142
05074782001 ¹⁾	7431 ESD	1/4"	0,30-1,00	0,05	89	142
05074784001 ¹⁾	7432 ESD	1/4"	0,90-1,50	0,05	89	142
05074730001	7440 ESD	1/4"	0,3-1,2	0,05	105	155
05074731001	7441 ESD	1/4"	1,2-3,0	0,10	105	155

¹⁾ With attachable magnifying glass, dramatically improving visibility.

Series 7400 ESD Krafftform adjustable torque screwdrivers (2.5-29.0 in.lbs.) with Rapidaptor quick-release chuck



Application: Suitable for 1/4" DIN ISO 1173 C 6.3 and E 6.3 hexagon insert bits and Wera Series 1 and 4

Design: Rapidaptor rapid-in, rapid-out, rapid-spin, chuck-all and single-hand technology, non-magnetic

Accuracy: ±6 % (DIN EN ISO 6789). Numerical torque value scale. Reliable slipping mechanism and acoustic signal when reaching the set torque.

Handle: Krafftform with non-roll feature, multi-component

	Art.No.	in. lbs.	in. lbs.	mm	mm	mm	mm
05074733001	7445 ESD	1/4"	2,5-11,5	0,5	105	155	6"
05074734001	7446 ESD	1/4"	11,0-29,0	1,0	105	155	6"

Series 7400 ESD Krafftform torque screwdrivers, with factory pre-set value (0.1-1.5 Nm) and Rapidaptor quick-release chuck, handle size 105 mm



Application: Suitable for 1/4" DIN ISO 1173-C 6.3 and E 6.3 hexagon insert bits and Wera Series 1 and 4

Design: Rapidaptor rapid-in, rapid-out, rapid-spin, chuck-all and single-hand technology

Pre-set torque: 0.3 Nm, 1.2 Nm

Accuracy: ± 6% (DIN EN ISO 6789). Reliable slipping mechanism and acoustic signal when reaching the set torque.

Handle: Krafftform with non-roll feature, multi-component

	Art.No.	Nm	Nm	mm	mm	mm	mm
05074840001	7460 ESD	1/4"	0,3	0,3-1,2	105	155	6"
05074842001	7461 ESD	1/4"	1,2	1,2-3,0	105	155	6"

¹⁾ The preset torque can be changed. However, this requires the use of special tools and Torque Test Equipment. Please contact the Wera Torque Service.

Series 7400 ESD Krafftform adjustable torque screwdrivers (0.1-1.0 Nm)



Application: Suitable for bits with 4 mm Halfmoon drive (and Wera Serie 9) and 4 mm HIOS drive (and Wera Series 21)

Design: With quick-release chuck for rapid bit change

Accuracy: ±6 % (DIN EN ISO 6789). Numerical torque value scale. Reliable slipping mechanism and acoustic signal when reaching the set torque.

Handle: Krafftform with non-roll feature, multi-component

	Art.No.	Nm	Nm	mm	mm	mm
05074786001	7435 ESD	0,10-0,34	0,015	89	142	5 7/16"
05074788001	7436 ESD	0,30-1,00	0,05	89	142	5 7/16"

¹⁾ With attachable magnifying glass, dramatically improving visibility.

Series 7400 ESD Krafftform torque screwdrivers with a customised factory pre-set measurement value, handle size 105 mm



Application: Suitable for 1/4" DIN ISO 1173-C 6.3 and E 6.3 hexagon insert bits and Wera Series 1 and 4

Design: Rapidaptor rapid-in, rapid-out, rapid-spin, chuck-all and single-hand technology

Pre-set torque: Adjustable to customer requirements within the specified measurement range

Accuracy: ± 6% (DIN EN ISO 6789). Reliable slipping mechanism and acoustic signal when reaching the set torque.

Handle: Krafftform with non-roll feature, multi-component

	Art.No.	Nm	mm	mm	mm	mm
05074840010	7460 ESD	1/4"	0,3-1,2	105	133	6"
05074842010	7461 ESD	1/4"	1,2-3,0	105	155	6"

¹⁾ The desired settings can be made in the following units: Nm, kgf. m, lbf. ft., ozf. in., dN. m, kgf. cm, lbf. in, in. oz, cN. m, gf. m, ft. lb, gf. cm, in. lb.

Series 7400 ESD Kraftform torque screwdrivers, with factory pre-set value (0.1-1.5 Nm) and Rapidaptor quick-release chuck, handle size 89 mm



Application: Suitable for 1/4" DIN ISO 1173-C 6.3 and E 6.3 hexagon insert bits and Wera Series 1 and 4

Design: Rapidaptor rapid-in, rapid-out, rapid-spin, chuck-all and single-hand technology

Pre-set torque: 0.1 Nm, 0.3 Nm, 0.9 Nm

Accuracy: ± 6% (DIN EN ISO 6789). Reliable slipping mechanism and acoustic signal when reaching the set torque.

Handle: Kraftform with non-roll feature, multi-component

	Art.No.	Nm	Nm	mm	mm	mm	mm
05074820001	1) 7450 ESD	1/4"	0,1	0,1-0,34	89	133	5 1/4"
05074822001	1) 7451 ESD	1/4"	0,3	0,3-1,0	89	133	5 1/4"
05074824001	1) 7452 ESD	1/4"	0,9	0,9-1,5	89	133	5 1/4"

¹⁾ The preset torque can be changed. However, this requires the use of special tools and Torque Test Equipment. Please contact the Wera Torque Service.

Series 7400 ESD Kraftform torque screwdrivers with a customised factory pre-set measurement value, handle size 89 mm



Application: Suitable for 1/4" DIN ISO 1173-C 6.3 and E 6.3 hexagon insert bits and Wera Series 1 and 4

Design: Rapidaptor rapid-in, rapid-out, rapid-spin, chuck-all and single-hand technology

Pre-set torque: Adjustable to customer requirements within the specified measurement range

Accuracy: ± 6% (DIN EN ISO 6789). Reliable slipping mechanism and acoustic signal when reaching the set torque.

Handle: Kraftform with non-roll feature, multi-component

	Art.No.	Nm	mm	mm	mm	mm
05074820010	7450 ESD	1/4"	0,1-0,34	89	133	5 1/4"
05074822010	7451 ESD	1/4"	0,3-1,0	89	133	5 1/4"
05074824010	7452 ESD	1/4"	0,9-1,5	89	133	5 1/4"

¹⁾ The desired settings can be made in the following units: Nm, kgf. m, lbf. ft., ozf. in., dN. m, kgf. cm, lbf. in, in. oz, cN. m, gf. m, ft. lb, gf. cm, in. lb.

Series 7400 ESD Kraftform torque screwdrivers, with factory pre-set value (0.1-1.0 Nm) and quick-release chuck



Application: Suitable for bits with 4 mm Halfmoon drive (and Wera Serie 9) and 4 mm HIOS drive (and Wera Series 21)

Design: With quick-release chuck for rapid bit change

Pre-set torque: 0.1 Nm, 0.3 Nm

Accuracy: ± 6% (DIN EN ISO 6789). Reliable slipping mechanism and acoustic signal when reaching the set torque.

Handle: Kraftform with non-roll feature, multi-component

	Art.No.	Nm	Nm	mm	mm	mm
05074826001	1) 7455 ESD	0,1	0,1-0,34	89	138	5 1/4"
05074828001	1) 7456 ESD	0,3	0,3-1,0	89	138	5 1/4"

¹⁾ The preset torque can be changed. However, this requires the use of special tools and Torque Test Equipment. Please contact the Wera Torque Service.

Series 7400 ESD Kraftform torque screwdrivers with a customised factory pre-set measurement value, with quick-release chuck



Application: Suitable for bits with 4 mm Halfmoon drive (and Wera Serie 9) and 4 mm HIOS drive (and Wera Series 21)

Design: With quick-release chuck for rapid bit change

Pre-set torque: Adjustable to customer requirements within the specified measurement range

Accuracy: ± 6% (DIN EN ISO 6789). Reliable slipping mechanism and acoustic signal when reaching the set torque.

Handle: Kraftform with non-roll feature, multi-component

	Art.No.	Nm	mm	mm	mm
05074826010	7455 ESD	0,1-0,34	89	138	5 1/4"
05074828010	7456 ESD	0,3-1,0	89	138	5 1/4"

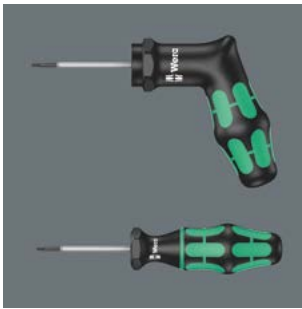
¹⁾ The desired settings can be made in the following units: Nm, kgf. m, lbf. ft., ozf. in., dN. m, kgf. cm, lbf. in, in. oz, cN. m, gf. m, ft. lb, gf. cm, in. lb.



Wera



Torque-indicators



Wera torque-indicators have been factory pre-set to values recommended by leading carbide tool manufacturers. These tightening values relate specifically to the size of the TORX®, TORX PLUS® or hexagon socket screw. Torque indicators ensure safe and easy loosening of screw connections.
Precision : ± 10 %.

For difficult-to-access places



Slim 4 mm hexagon blades to reach screws in difficult-to-access places.

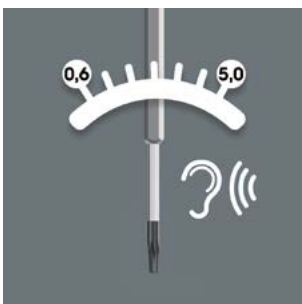


Tamperproof



Non-adjustable and tamper-proof.

Excess-load signal



Distinctly audible and noticeable excess-load signal when the pre-set torque is reached.

300 Hex Torque-indicator



Application: Hexagon socket screws

Pre-set torque: 1.4 Nm-3.0 Nm (1.0 ft.lb.-2.2 ft.lb.), fixed pre-sets

Accuracy: ±10 %. Reliable slipping mechanism and acoustic signal when reaching the set torque.

Blade: Hexagonal, 4 mm, reduced diameter tip

Design: Hex-Plus, Black Point

Handle: Kraftform with non-roll feature, multi-component

	Nm	ft. lb.	mm	mm	mm	mm	mm	
05027910001	2,0	1,4	1,0	4	3,5	65	105	2 9/16"
05027911001	2,5	2,0	1,5	4	3,8	65	105	2 9/16"
05027912001	3,0	3,0	2,2	4	3,8	65	105	2 9/16"

300 Hex Torque-indicator, pistol handle



Application: Hexagon socket screws

Pre-set torque: 5.0 Nm (3.7 ft. lb.), fixed pre-set

Accuracy: ±10 %. Reliable slipping mechanism and acoustic signal when reaching the set torque.

Blade: Hexagonal, 8 mm, reduced diameter tip

Design: Hex-Plus, Black Point

Handle: Kraftform pistol grip, multi-component

	Nm	ft.lb.	mm	mm	mm	mm	
05027913001	4,0	5,0	3,7	160	100	65	2 9/16"

300 TX TORX® Torque-indicator



Application: TORX® socket screws

Pre-set torque: 0.6 Nm-3.0 Nm (0.4 ft.lb.-2.2 ft.lb.), fixed pre-sets

Accuracy: ±10 %. Reliable slipping mechanism and acoustic signal when reaching the set torque.

Blade: Hexagonal, 4 mm, reduced diameter tip

Design: Black Point

Handle: Kraftform with non-roll feature, multi-component

		Nm	ft. lb.					
				mm	mm	mm	mm	mm
05027930001	TX 6	0,6	0,4	4	3,5	65	105	2 9/16"
05027931001	TX 7	0,9	0,7	4	3,5	65	105	2 9/16"
05027932001	TX 8	1,2	0,9	4	3,5	65	105	2 9/16"
05027933001	TX 9	1,4	1,0	4	3,5	65	105	2 9/16"
05027934001	TX 10	2,0	1,5	4	3,8	65	105	2 9/16"
05027935001	TX 15	3,0	2,2	4	3,8	65	105	2 9/16"

300 IP TORX PLUS® Torque-indicator



Application: TORX PLUS® socket screws

Pre-set torque: 0.6 Nm-3.0 Nm (0.4 ft.lb.-3.0 ft.lb.), fixed pre-sets

Accuracy: ±10 %. Reliable slipping mechanism and acoustic signal when reaching the set torque.

Blade: Hexagonal, 4 mm, reduced diameter tip

Design: Black Point

Handle: Kraftform with non-roll feature, multi-component

		Nm	ft. lb.					
				mm	mm	mm	mm	mm
05028040001	6 IP	0,6	0,4	4	3,5	65	105	2 9/16"
05028041001	7 IP	0,9	0,7	4	3,5	65	105	2 9/16"
05028042001	8 IP	1,2	0,9	4	3,5	65	105	2 9/16"
05028043001	9 IP	1,4	1,0	4	3,5	65	105	2 9/16"
05028044001	10 IP	2,0	1,5	4	3,8	65	105	2 9/16"
05028045001	15 IP	3,0	2,2	4	3,8	65	105	2 9/16"

300 TX TORX® Torque-indicator, pistol handle



Application: TORX® socket screws

Pre-set torque: 5.0 Nm (3.7 ft. lb.), fixed pre-set

Accuracy: ±10 %. Reliable slipping mechanism and acoustic signal when reaching the set torque.

Blade: Hexagonal, 8 mm, reduced diameter tip

Design: Black Point

Handle: Kraftform pistol grip, multi-component

		Nm	ft.lb.			
				mm	mm	mm
05027936001	TX 20	5,0	3,7	160	100	65

300 IP TORX PLUS® Torque-indicator, pistol handle



Application: TORX PLUS® socket screws

Pre-set torque: 5.0 Nm (3.7 ft. lb.), fixed pre-set

Accuracy: ±10 %. Reliable slipping mechanism and acoustic signal when reaching the set torque.

Blade: Hexagonal, 8 mm, reduced diameter tip

Design: Black Point

Handle: Kraftform pistol grip, multi-component

		Nm	ft.lb.			
				mm	mm	mm
05028046001	20 IP	5,0	3,7	160	100	65

Torque-indicators



Suitable for applications requiring a non-adjustable i.e. a tamperproof torque blade assembly.

Excess-load signal



Distinctly audible and noticeable excess-load signal when the pre-set torque is reached.

Ergonomic design



The ergonomic design of the T-handle fills the palm of the hand. The fingers rest in the soft, rounded recess, and the whole hand is in contact with the handle – so there is no friction loss between the hand and handle.

Multi-component handle



Multi-component screwdriver handle for ergonomic working.

The important information is indicated on the tool



The handle is marked with an indicative screw symbol, size, torque and maximum release torque.

400 Hex Torque-indicator



Application: Hexagon socket screws

Pre-set torque: 4,0 Nm, 5,0 Nm; fixed pre-set

Accuracy: ±10 %. Reliable slipping mechanism and acoustic signal when reaching the set torque.

Blade: Round

Design: Hex-Plus, brushed chrome-plated finish, Black Point

Handle: T-handle, multi-component

	⊙	Nm	mm	mm	mm	⌘	mm
05005080001	4,0	4,0	60	48	100	2 3/8"	7,0
05005081001	5,0	5,0	60	48	100	2 3/8"	7,0

400 TX Torque-indicator



Application: TORX® socket screws

Pre-set torque: 4,0 Nm, 5,0 Nm; fixed pre-set

Accuracy: ±10 %. Reliable slipping mechanism and acoustic signal when reaching the set torque.

Blade: Round

Design: Brushed chrome-plated finish, Black Point

Handle: T-handle, multi-component

	⊙	Nm	mm	mm	mm	⌘	mm
05005090001	TX 20	4,0	60	48	100	2 3/8"	7,0
05005091001	TX 25	5,0	60	48	100	2 3/8"	7,0





Individually tested



Each Kraftform Kompakt VDE set has been tested individually at 10,000 volts, in accordance with IEC 60900. This ten-times-higher testing load guarantees safe working at their maximum permitted load of 1,000 volts.

Handle/interchangeable blade system – Kraftform Kompakt VDE



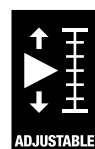
The handle/interchangeable blade system allows rapid exchange of the blades required for a wide range of applications.



Easy-to-read



Easy-to-read scale value. Measurement accuracy is $\pm 6\%$ in accordance with the standard EN ISO 6789.



Simple setting



Simple setting of the required torque by hand.

Kraftform Kompakt VDE 16 Torque 1.2-3.0 Nm extra slim 1



1 Series 7400 VDE Kraftform adjustable torque handle (1.2 - 3.0 Nm) and 1 Kraftform handle 817 VDE for Wera VDE interchangeable blades only

VDE interchangeable blades (each 154 mm long) with reduced blade diameter (articles KK 60 i 0,4x2,5 and KK 67 i TX 10 conventional diameter) with integrated protective insulation, allows sunken screws and spring elements to be accessed and actuated

16-piece set

05135906001	
●	7400 VDE 1x 7441 VDE, 1,2-3,0 Nm
●	817 VDE 1x 9x98
+	Kraftform Kompakt VDE 62 iS 1x PH 1x154; 1x PH 2x154
+	Kraftform Kompakt VDE 65 iS 1x PZ 1x154; 1x PZ 2x154
+	Kraftform Kompakt VDE 65 iS PZ/S 1x # 1x154; 1x # 2x154
+	Kraftform Kompakt VDE 67 i TORX® 1x TX 10x154
+	Kraftform Kompakt VDE 67 iS TORX® 1x TX 15x154; 1x TX 20x154; 1x TX 25x154
●	Kraftform Kompakt VDE 60 i 1x 0,4x2,5x154
●	Kraftform Kompakt VDE 60 iS 1x 0,6x3,5x154; 1x 0,8x4,0x154; 1x 1,0x5,5x154
	Hook and Loop Fastener Strip 70 1x 50,0x70,0

Kraftform Kompakt VDE 15 Torque 1.2-3.0 Nm extra slim 1



1 Series 7400 VDE Kraftform adjustable torque handle (1.2 - 3.0 Nm) for Wera VDE interchangeable blades only

VDE interchangeable blades (each 154 mm long) with reduced blade diameter (articles KK 60 i 0,4x2,5 and KK 67 i TX 10 conventional diameter) with integrated protective insulation, allows sunken screws and spring elements to be accessed and actuated

15-piece set

05059291001	
●	7400 VDE 1x 7441 VDE, 1,2-3,0 Nm
+	Kraftform Kompakt VDE 62 iS 1x PH 1x154; 1x PH 2x154
+	Kraftform Kompakt VDE 65 iS 1x PZ 1x154; 1x PZ 2x154
+	Kraftform Kompakt VDE 65 iS PZ/S 1x # 1x154; 1x # 2x154
+	Kraftform Kompakt VDE 67 i TORX® 1x TX 10x154
+	Kraftform Kompakt VDE 67 iS TORX® 1x TX 15x154; 1x TX 20x154; 1x TX 25x154
●	Kraftform Kompakt VDE 60 i 1x 0,4x2,5x154
●	Kraftform Kompakt VDE 60 iS 1x 0,6x3,5x154; 1x 0,8x4,0x154; 1x 1,0x5,5x154

Series 7400 VDE Krafftform adjustable torque handle (0.3-3.5 Nm)



Application: For Wera interchangeable Krafftform Kompakt VDE blades only

Accuracy: $\pm 6\%$ (DIN EN ISO 6789). Numerical torque value scale. Reliable slipping mechanism and acoustic signal when reaching the set torque.

Handle: Krafftform with non-roll feature, multi-component

	Art.No.	mm	Nm	Nm	mm	mm
05074752001	7440 VDE	9	0,3-1,2	0,05	192	7 9/16"
05074750001	7441 VDE	9	1,2-3,0	0,10	192	7 9/16"
05074757001	7444 VDE	9	1,7-3,5	0,10	192	7 9/16"

Krafftform Kompakt VDE 60 i



Application: Slotted screws

Blade: Insulated, individually tested as per IEC 60900

Drive: 9 mm hexagonal with entry chamfer

Design: Conical blade, zinc-phosphated, Black Point

	mm	mm	mm	mm	mm
05003400001	0,4	2,5	154	3/32"	6 1/16"
05003401001	0,5	3,0	154	1/8"	6 1/16"
05003402001	0,6	3,5	154	9/64"	6 1/16"
05003403001	0,8	4,0	154	5/32"	6 1/16"
05003404001	1,0	5,5	154	7/32"	6 1/16"
05003405001	1,2	6,5	154	1/4"	6 1/16"

Krafftform Kompakt VDE 60 iS



Application: Slotted screws

Blade: Reduced blade diameter with integrated protective insulation, allows sunken screws and spring elements to be accessed and actuated, individually tested as per IEC 60900

Drive: 9 mm hexagonal with entry chamfer

Design: Conical blade, zinc-phosphated, Black Point

	mm	mm	mm	mm	mm
05003406001	0,6	3,5	154	9/64"	6 1/16"
05003407001	0,8	4,0	154	5/32"	6 1/16"
05003408001	1,0	5,5	154	7/32"	6 1/16"

Krafftform Kompakt VDE 62 i



Application: Phillips screws

Blade: Insulated, individually tested as per IEC 60900

Drive: 9 mm hexagonal with entry chamfer

Design: Zinc-phosphated, Black Point

	+	mm	mm
05003410001	PH 0	154	6 1/16"
05003411001	PH 1	154	6 1/16"
05003412001	PH 2	154	6 1/16"

Krafftform Kompakt VDE 62 iS



Application: Phillips screws

Blade: Reduced blade diameter with integrated protective insulation, allows sunken PH screws to be accessed and actuated, individually tested as per IEC 60900

Drive: 9 mm hexagonal with entry chamfer

Design: Zinc-phosphated, Black Point

	+	mm	mm
05003413001	PH 1	154	6 1/16"
05003414001	PH 2	154	6 1/16"

Kraftform Kompakt VDE 62 i PH/S



Application: PlusMinus screws, slotted/Phillips

Blade: Insulated, individually tested as per IEC 60900

Drive: 9 mm hexagonal with entry chamfer

Design: Zinc-phosphated, Black Point

	⊕	⌘	⌘
		mm	
05003440001	# 1	154	6 1/16"
05003441001	# 2	154	6 1/16"

Kraftform Kompakt VDE 65 iS



Application: Pozidriv screws

Blade: Reduced blade diameter with integrated protective insulation, allows sunken PZ screws to be accessed and actuated, individually tested as per IEC 60900

Drive: 9 mm hexagonal with entry chamfer

Design: Zinc-phosphated, Black Point

	⊕	⌘	⌘
		mm	
05003455001	PZ 1	154	6 1/16"
05003456001	PZ 2	154	6 1/16"

Kraftform Kompakt VDE 62 iS PH/S



Application: PlusMinus screws, slotted/Phillips

Blade: Reduced blade diameter with integrated protective insulation, allows sunken PlusMinus screws to be accessed and actuated, individually tested as per IEC 60900

Drive: 9 mm hexagonal with entry chamfer

Design: Zinc-phosphated, Black Point

	⊕	⌘	⌘
		mm	
05003442001	# 1	154	6 1/16"
05003443001	# 2	154	6 1/16"

Kraftform Kompakt VDE 65 i



Application: Pozidriv screws

Blade: Insulated, individually tested as per IEC 60900

Drive: 9 mm hexagonal with entry chamfer

Design: Zinc-phosphated, Black Point

	⊕	⌘	⌘
		mm	
05003450001	PZ 0	154	6 1/16"
05003451001	PZ 1	154	6 1/16"
05003452001	PZ 2	154	6 1/16"

Kraftform Kompakt VDE 65 i PZ/S



Application: PlusMinus screws, slotted/Pozidriv

Blade: Insulated, individually tested as per IEC 60900

Drive: 9 mm hexagonal with entry chamfer

Design: Zinc-phosphated, Black Point

	⊕	⌘	⌘
		mm	
05003445001	# 1	154	6 1/16"
05003446001	# 2	154	6 1/16"

Kraftform Kompakt VDE 65 iS PZ/S



Application: PlusMinus screws, slotted/Pozidriv

Blade: Reduced blade diameter with integrated protective insulation, allows sunken PlusMinus screws to be accessed and actuated, individually tested as per IEC 60900

Drive: 9 mm hexagonal with entry chamfer

Design: Zinc-phosphated, Black Point

	⊕	⌘	⌘
		mm	
05003447001	# 1	154	6 1/16"
05003448001	# 2	154	6 1/16"

Kraftform Kompakt VDE 67 i TORX®



Application: TORX® socket screws

Blade: Insulated, individually tested as per IEC 60900

Drive: 9 mm hexagonal with entry chamfer

Design: Zinc-phosphated, Black Point

		mm	mm
05003429001	TX 8	154	6 1/16"
05003430001	TX 9	154	6 1/16"
05003431001	TX 10	154	6 1/16"
05003432001	TX 15	154	6 1/16"
05003433001	TX 20	154	6 1/16"
05003434001	TX 25	154	6 1/16"
05003435001	TX 27	154	6 1/16"
05003436001	TX 30	154	6 1/16"

Kraftform Kompakt VDE 68 i



Application: Square socket head screws

Blade: Insulated, individually tested as per IEC 60900

Drive: 9 mm hexagonal with entry chamfer

Design: Zinc-phosphated, Black Point

		mm	mm
05003415001	# 1	154	6 1/16"
05003416001	# 2	154	6 1/16"

PlusMinus screwdrivers



For the use in terminal blocks, control cabinets, switches, relays, sockets etc.: combination profiles Phillips/slotted resp. Pozidriv/slotted.

Kraftform Kompakt VDE 64 i



Application: Hexagon socket screws

Blade: Insulated, individually tested as per IEC 60900

Drive: 9 mm hexagonal with entry chamfer

Design: Zinc-phosphated, Black Point

		mm	mm	mm
05003420001	2,5	154	6 1/16"	
05003421001	3,0	154	6 1/16"	
05003422001	4,0	154	6 1/16"	
05003423001	5,0	154	6 1/16"	
05003424001	6,0	154	6 1/16"	

Kraftform Kompakt VDE 67 iS TORX®



Application: TORX® socket screws

Blade: Reduced blade diameter with integrated protective insulation, allows sunken TORX® socket screws to be accessed and actuated, individually tested as per IEC 60900

Drive: 9 mm hexagonal with entry chamfer

Design: Zinc-phosphated, Black Point

		mm	mm
05003437001	TX 15	154	6 1/16"
05003438001	TX 20	154	6 1/16"
05003439001	TX 25	154	6 1/16"

Kraftform Kompakt VDE 68 iS



Application: Square socket head screws

Blade: Reduced blade diameter with integrated protective insulation, allows sunken square socket head screws to be accessed and actuated, individually tested as per IEC 60900

Drive: 9 mm hexagonal with entry chamfer

Design: Zinc-phosphated, Black Point

		mm	mm
05003417001	# 1	154	6 1/16"
05003418001	# 2	154	6 1/16"

Torque-indicators



Suitable for applications requiring a non-adjustable i.e. a tamperproof torque blade assembly.

Excess-load signal



Distinctly audible and noticeable excess-load signal when the pre-set torque is reached.

Ergonomic design



The ergonomic design of the T-handle fills the palm of the hand. The fingers rest in the soft, rounded recess, and the whole hand is in contact with the handle – so there is no friction loss between the hand and handle.

Multi-component handle



Multi-component screwdriver handle for ergonomic working.

The important information is indicated on the tool



The handle is marked with an indicative screw symbol, size, torque and maximum release torque.

400 i VDE Hex Insulated torque-indicator



Application: Hexagon socket screws

Pre-set torque: 5.0 Nm, fixed pre-set

Accuracy: ±10 %. Reliable slipping mechanism and acoustic signal when reaching the set torque.

Blade: Insulated, individually tested as per IEC 60900

Design: Hex-Plus, Black Point

Handle: T-handle, multi-component

	⊙	Nm	T: mm	T: mm	T: mm	T: 3 1/2"	∅ mm
05004980001	4,0	5,0	90	48	100	3 1/2"	8,0
05004981001	5,0	5,0	90	48	100	3 1/2"	8,0

TORQUE Test Values



Slotted Tools

Drives: DIN ISO 2380, VSM 35601.
TORQUE values evaluated in test gages according to DIN ISO 2380 on TORQUE testing equipment.

a x b mm	TORQUE in Nm (min)	
	handuse	poweruse
0,3 x 2,0	0,18	0,20
0,4 x 2,0	0,30	0,35
0,4 x 2,5	0,40	0,45
0,5 x 3,0	0,70	0,80
0,5 x 3,5	0,90	0,98
0,6 x 3,5	1,30	1,40
0,6 x 4,0	1,40	1,61
0,6 x 4,5	-	1,80
0,8 x 4,0	2,60	2,90
0,8 x 4,5	2,88	
0,8 x 5,0	3,20	3,58
0,8 x 5,5	3,50	3,90
1,0 x 5,5	5,50	6,20
1,0 x 6,5	6,50	7,28
1,0 x 7,0	7,0	7,80
1,2 x 6,5	9,40	10,50
1,2 x 7,0	10,0	11,28
1,2 x 8,0	11,5	12,90
1,4 x 9,0	17,6	19,70
1,5 x 13	29	32
1,6 x 8,0	20,5	22,9
1,6 x 9,0	23	25
1,6 x 10	25,6	28,7
2,0 x 12	48,0	53
2,0 x 13	52	58
2,5 x 14	87	98
2,5 x 16	100	112
3,0 x 18	162	181

Important device:

After TORQUE testing with the minimum value, screwdrivers shall not show any deformation or injuries at the tip.



Hexagon Tools

Drives: DIN ISO 2936. TORQUE values evaluated in test gages according to DIN ISO 2936 on TORQUE testing equipment.

SW (mm)	TORQUE in Nm (min)
0,7	0,08
0,9	0,18
1,3	0,53
1,5	0,82
2,0	1,9
2,5	3,8
3	6,6
3,5	11
4	16
4,5	24
5	30
6	52
7	78
8	120
9	180
10	220
11	295
12	370
13	480
14	590
17	1000
19	1000
22	1000
24	1000
27	1000



PH and PZ Tools

Drives: DIN 5260, ISO 8764 and SMS-SS 1687.
TORQUE values evaluated in test gages according to DIN 5261, ISO 8764 on TORQUE testing equipment.

TORQUE in Nm (min)	TORQUE in Nm (min)	
	handuse	poweruse
0	1,0	1,0
1	3,5	3,9
2	8,2	10,3
3	19,5	32,0
4	38,0	88,7



Tools with TORX® and TORX PLUS® drive

TORQUE values evaluated with testing gages of Acument Global Technologies Inc., licensor of TORX® and TORX PLUS®.

TORQUE in Nm (min.)	TORX®			TORX PLUS®		
	Bit	Resis-Bit	Screw-driver	Bit	Resis-Bit	Screw-driver
1	0,10	-	0,08	0,11		
2	0,14	-	0,12	0,16		
3	0,25	-	0,21	0,28		
4	0,37	-	0,31	0,44		
5	0,51	-	0,43	0,61		
6	0,91	-	0,75	1,11		0,92
7	1,7	1,4	1,4	2,10		1,68
8	2,6	2,2	2,2	3,21	2,5	2,79
9	3,4	2,9	2,8	4,19	3,3	3,49
10	4,5	3,8	3,7	5,42	4,3	4,47
15	7,7	6,5	6,4	9,62	7,3	8,06
20	12,7	10,8	10,5	16,15	11,9	13,41
25	19,0	16,1	15,9	23,50	17,4	19,58
27	26,9	22,9	22,5	34,62	25,1	28,95
30	37,4	31,8	31,1	47,18	33,5	39,34
40	65,1	55,3	54,1	82,08	59,4	68,40
45	104	88	86	137,38	97,3	114,44
50	159	135	132	194,54	152,4	162,14
55	257	218	218	352,10	291,5	299,25
60	445	379	379	566,11	483,0	481,24
70	701	596	600	910,40	713,3	773,91



Tools with TORQ-SET® drive

TORQUE values evaluated with testing gages of Phillips Screw Company, licensor of TORQ-SET®, on TORQUE testing equipment.

TORQUE in Nm (min)	TORQUE in Nm (min)	
	Bits	Screw-drivers
2	1,1	1,1
3	1,7	1,7
4	2,8	2,8
5	4,0	4,0
6	5,1	5,1
8	8,5	8,5
10	11,3	11,3
1/4"	28	17
5/16"	56	28
3/8"	102	62
7/16"	147	
1/2"	249	
9/16"	271	
5/8"	339	



No liability for printing errors or mistakes shall be assumed.

All regions (except for North America, UK and Republic of Ireland):

Wera Werkzeuge GmbH
Korzter Straße 21-25
D-42349 Wuppertal
Germany

Phone: +49 (0)202/4045-0
E-Mail: info@wera.de
Internet: www.wera.de

North America:

Wera Tools Inc.
4129 Harvester Rd, Unit H
Burlington, Ontario
Canada, L7L 5M3

Phone: 1-800-267-55 41
E-Mail: info@weratools.com
Internet: www.weratools.com

UK & Republic of Ireland:

Wera Tools (UK) LTD.
Railway View
Clay Cross, Chesterfield
Derbyshire, S45 9FR

Phone: +44 (0)1246 / 277756
eMail: queries@weratools.co.uk
Internet: www.weratools.co.uk

